

ETVC

Educational TV Channel Newsletter

Volume Three, Number 3 November - December, 1984

The View From the Chair

aka KIM'S KORNER

For those of you who missed the September Social -- it was just grand! Thanks to the Social Committee, the September party was a fun-filled evening full of nice surprises. Good sport Nancy donned a very lovely black French Maid's outfit with cap and apron and delighted members and guests with her unique style of serving champagne, aperitifs and candies. This set a relaxed and lovely mood for the evening, leading several members and friends to remark how much they had enjoyed themselves. I heard phrases like "lovely party," and "really a nice time" from several people. With the added elegance of the French maid, the September Social was turned into a very special occasion.

Because of the creative agility of our Social Committee coordinators Ginny and Nancy, the ETVC parties are a delight to attend and a joy to participate in. But Ginny and Nancy do need assistance to make them even more enjoyable. The Social Committee needs your help in one or both of two ways: 1) helping plan the parties and social events for our monthly meetings and 2) setting up the party decorations before the party begins or, in some cases, the night before, and taking them down plus cleanup after the party. I know these are not glamorous jobs. But to have an enjoyable time for all, the preparation for -- and cleanup after -- a party is a very important job. They only take a few minutes and are invaluable help to our hardworking Social Committee coordinators.

If you haven't met Nancy or Ginny yet, you are in for a treat. Please feel free to introduce yourself to them at the very next party and take it upon yourself to
(continued on p. 2)

ETVC News

Executive Committee Meetings

Continuing its policy of convening in the evening of the second Saturday following each monthly meeting, the Executive Committee met on Saturday, October 6th, at Ginny's place. Among our six hours of business (8 pm to 2 am!) was the finalizing of the Halloween Party for October and the continuation of discussions concerning the games night in November and the "Miss ETVC" pageant in December. We all left exhausted (!) but satisfied that we had accomplished a great deal.

We'd like to encourage more of you to attend so we plan to hold the next meeting, scheduled for Saturday, November 3rd at 8 pm, over dinner at the Chez Mollet. Please contact any officer (see list on p.2) at the Halloween Party to confirm time and place of the meeting. We all look forward to having you join us! And don't worry! It doesn't require the same kind of insane stamina your officers exhibit; stay as long as you like. We would like both the pleasure of your company and your input into our discussions and plans.

The following committee meeting is scheduled for Saturday, December 8th.

Couples Support Group

The Executive Committee has been looking into the possibility of forming a couples' support group within ETVC, or perhaps less formally, assembling a roster of couples who would be available for sharing their feelings and experiences with other couples.

This idea began with our receiving a letter in which a husband expressed his anguish over the problems he and his wife
(continued on p. 6)

ETVC Meetings & Parties

** WOW ***** PARTIES ***** FUN ***** GOOD TIMES ***** PARTIES ***** FUN ***** WOW **

GAME NIGHT

Thursday, November 29, 1984

DECEMBER COTILLION

Thursday, December 27, 1984

Spend a night out with "les girls" playing bridge, poker, backgammon, yaghtze or lots of other fun games. Tables will be set for those wishing to have dinner at the Chez from their menu of fine French and American cuisine. Reservations are recommended by calling the Chez at (415) 495-4527. Reminder: no food will be served in the back room after 10 pm.

This will be the highlight party of the holiday season. The Chez will be decorated in a really festive style for this lovely event. Dancing, dining (thru the Chez) and romantic mood music will make this a night to remember.

This party will be a great way to make new acquaintances; make it a point to pick as your game partner someone you don't yet know. There is lots of girl talk on tap and a fun-filled evening for all to enjoy. Another exciting raffle plus table prizes will be highlights of this game night. This pleasant evening is planned for Thursday, November 29th at 8 pm. (This is one week after Thanksgiving.) Fees will be \$3 for members, \$5 for nonmembers and guests. This is also an excellent time to become a member of ETVC and tell all your game-playing friends to come with you!

The highlight of the evening will be the first "Miss ETVC" competition. Miss ETVC of 1985 will win prizes valued at well over \$200. Nominations for Miss ETVC are now being accepted with all TV's and TS's eligible. To enter your name in the Miss ETVC contest, please talk to Ginny, Nancy, Kim or Robin at any of the upcoming meetings. There are already several entrants but more contestants would be nice. Each contestant should be attired in a gown for the occasion. All party goers wearing a gown (whether a contestant or not) will receive a lovely corsage. Judges for Miss ETVC are being lined up by the Social Committee and a few professional female impersonators have already consented to be on the panel.

KIM'S KORNER continued from p. 1

tell them you will be glad to help out with planning, setup or cleanup of our parties. Ginny and Nancy will welcome you with open arms.

The December Cotillion is scheduled for Thursday, December 27th, starting at 8 pm. Party fees are a low \$5 for members and \$7 for nonmembers and guests. This is the last party of 1984 and an exciting way to welcome in 1985. Come join all of us as we celebrate the new year with Miss ETVC 1985!

ETVC has two committees: Social and Outreach & Education, ably headed by Robin. If the Social Committee is not for you, please sign up for the Outreach Committee and join with Robin in planning and carrying out our future Outreach activities. Enrich your own ETVC experience by joining a committee and getting involved in helping make ETVC a truly enjoyable experience for all of us.

OUTREACH & EDUCATION COMMITTEE REPORT

The current Executive Committee officers for the 1984-85 year are:

- Coordinator -- Kim
- Treasurer & Outreach Coordinator -- Robin
- Secretary -- Liana
- Social Committee Coordinators -- Ginny & Nancy Ann

In the last couple of months, we have answered 8 requests for information about ETVC in general (5 of which were apparently generated by the ad mentioned in the last newsletter) and 3 requests for particular information.

We have also begun designing a 4"x6" flyer that is intended to be an "introduction to ETVC" card that can be given to people we may meet outside our meetings who express an interest in ETVC. When folded in half, it will be a convenient size for carrying in a purse or handbag.



Welcome to ETVC

Who we are... and how to find us.

ETVC (Educational TV Channel) is a social, recreational and educational support group for transvestites, transsexuals, transgenderists and their friends and/or Significant Others.

In the spring of 1982, a small group of cross-dressers and transgenderists in the San Francisco Bay area, wanting to create a safe social milieu for themselves, began getting together on a regular basis at various individuals' homes. We chose a name for our group (ETVC) and as word got around and more people started showing up at the gatherings, we established regular monthly socials at a San Francisco restaurant, the Chez Mollet. In less than a year, our "theme" parties or events were drawing an average of 40-60 people and ETVC had become established as one of the best places in the Bay area for TV's, TS's and TG's to go for a sociable night out on the town.

Starting in 1983, we began to adopt a set of bylaws to provide a formal structure for the group. Under these Bylaws, ETVC is a membership organization (although non-members who share our interests are welcome to attend) wherein responsibility for coordinating its activities rests with a 5-member Executive Committee.

Since we exist to help meet the needs of TV's, TS's and TG's, we are delighted to welcome new people who share our interests to any of our regular meetings which take place the last Thursday of every month at the Chez Mollet restaurant, 527 Bryant St., San Francisco, CA from 8 pm to 12 midnight. Their specialty is French cuisine and reservations are usually advisable. Directions to the Chez Mollet are on the back.

We would like to encourage all our friends, new and old, to become members of ETVC. On the reverse is a mail-in membership form for your convenience. Anyone can also become a member at the door on the night of any ETVC function. Reprinted below is the Statement of Purpose and membership eligibility criteria from our Bylaws.

STATEMENT OF PURPOSE

The purpose of the "Educational TV Channel" (hereinafter "ETVC") is two-fold: (1) to serve the educational, social and recreational needs of transvestites (either female or male), transsexuals (either female or male), and all other persons (either female or male) whose social role differs in any degree from that role considered to be appropriate for an individual of his or her genetic sex, and (2) to undertake educational activities intended to assist the general public in comprehending transvestism, transsexualism, and transgenderism.

MEMBERSHIP (Eligibility)

Membership in ETVC is open to any person (male or female) who is 18 years of age or older and who believes that he or she is, or may be, a (1) transvestite, (2) transsexual, or (3) person whose social role differs in any degree from that role considered to be appropriate for an individual of his or her genetic sex. Membership is also open to (1) a spouse or significant other of one who is eligible for membership in ETVC under the preceding sentence, and (2) one who is 18 years of age or older and who has (a) a personal or professional interest in one or more persons who fall into one or more of the categories established in the preceding sentence, or (b) a personal or professional interest in transgenderism or gender dysphoria generally.

(BYLAWS adopted May 31, 1984)

DIRECTIONS

From the East Bay:

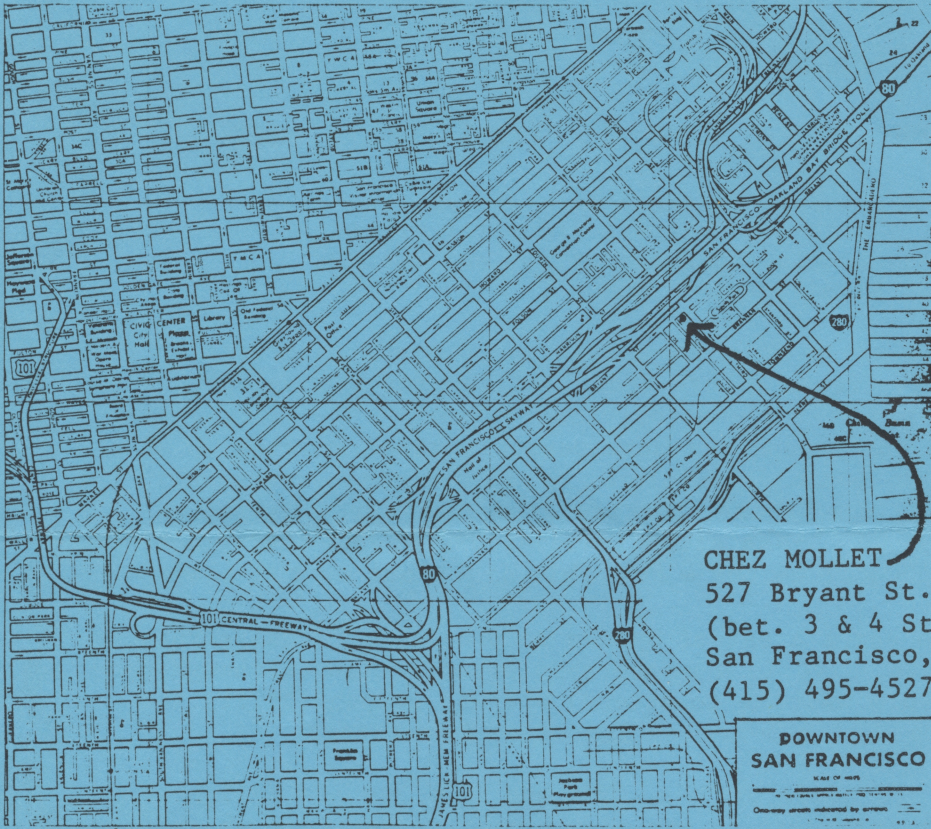
Take the Bay Bridge (I-80) to the Fifth St. exit, turn left onto Fifth St. and left again onto Bryant St.

From north of San Francisco:

Follow US 101 across the Golden Gate Bridge and thru the city to I-80. Take the Fourth St. exit directly onto Bryant St. The Chez is straight ahead.

From the South Bay:

Take US 101 north to I-80 and the Fourth St. exit. Alternatively, take I-280 to its end at Fourth St., cross over and take a left onto Third St. and go up 4 blocks to Bryant St.



MEMBERSHIP IN ETVC

Under the Bylaws, the membership year runs from June 1 to May 31. An annual membership is \$7.00 when purchased between June 1 and November 30, and \$4.00 when purchased between December 1 and May 31, and offers the following benefits:

- 1) reduced rate for parties;
- 2) a membership card which facilitates your entrance into our parties;
- 3) free or reduced cost for ETVC publications and services;
- 4) a say in how ETVC is run for your benefit: a vote for the members of the Executive Committee at the May Annual Meeting and the right to attend meetings of the Executive Committee;
- 5) provides ETVC with funds to continue our momentum towards becoming a stronger and more supportive organization.

***** MAIL-IN MEMBERSHIP APPLICATION FORM *****

(Please print)

MAILING NAME: _____

MAILING ADDRESS: _____

ZIP: _____

PREFERRED NAME: _____

Remit \$7.00 by check or money order to: ETVC
P.O. Box 6486
San Francisco, CA 94101

So don't delay! Become a member of ETVC today!!

TV/TS/TG Groups in Northern California

A Calendar of Events for

NOVEMBER & DECEMBER 1984



NOVEMBER

DECEMBER

- | | |
|--|---|
| 2 - San Jose G.G.A. 8pm | 5 - Pacific Center 8pm |
| 2 - Santa Rosa G.G.A. 8pm | 7 - San Jose G.G.A. 8pm |
| 7 - Pacific Center 8pm | 7 - Santa Rosa G.G.A. 8pm |
| 9 - Sacramento G.G.A. 8pm | 14 - Sacramento G.G.A. 8pm |
| 16 - San Jose G.G.A. 8pm | 19 - Pacific Center 8pm |
| 21 - Pacific Center 8pm * | 19 - Santa Rosa G.G.A. 8pm * |
| 21 - Santa Rosa G.G.A. 8pm * | 21 - San Jose G.G.A. 8 pm * |
| 29 - ETVC "Games Night" 8pm | 27 - ETVC Cotillion "Miss ETVC Pageant" 8pm |
| 30 - Pacific Center party or speaker 8pm | 28 - Pacific Center 10-year Anniversary Party |

* Due to Thanksgiving, these groups may not be meeting this week; call in advance to confirm.

NOTE: Detailed information about each group listed in the Calendar is given below.

EDUCATIONAL T.V. CHANNEL (E.T.V.C.) P. O. Box 6486 San Francisco, CA 94101	A Bay area "TV/TS/TG and friends" membership-based, social group. Memberships \$7 per year but not required to attend. Social events/meetings held the last Thursday each month from 8 pm at: Chez Mollet restaurant, 527 Bryant St., San Francisco, (415) 495-4527 (for dinner reservations only).
---	---

PACIFIC CENTER 2712 Telegraph Avenue Berkeley, CA 94705 (415) 841-6224: info.	This human growth center sponsors a TV/TS rap group which meets the first & third Wednesdays and last Friday each month, starting at 8 pm. Another place to go out dressed. Fee is a \$2 donation to help support the Center.
--	---

GATEWAY GENDER ALLIANCE (G.G.A.) P. O. Box 62283 Sunnyvale, CA 94088	A national TV/TS organization with branches in the San Jose, Santa Rosa and Sacramento areas. They hold low key discussion meetings and an occasional party. They produce a monthly magazine <u>The Phoenix</u> and have a correspondence service. Dues are \$25 per year to join as an Associate Member and donations are requested at each meeting. You do not have to be a member to attend the discussion meetings.
---	---

SAN JOSE G.G.A.	Meetings are the first and third Fridays each month at 8pm at: Unitarian Church, 160 N. 3rd St., San Jose (408) 734-3773.
-----------------	---

SANTA ROSA G.G.A.	Meetings are the first Friday and third Wednesday at 8 each month. Contact Maria Scafidi at (707) 538-9099 for details.
-------------------	---

SACRAMENTO G.G.A.	Meetings are held the second Friday at 8pm each month at: M.C.C. Church, 2741 34th St. (34th & Broadway), Sacramento. Contact Pati Fink at (916) 371-8491 for details.
-------------------	--

Advertisements

Anyone wishing to advertise in the EDUCATIONAL TV CHANNEL NEWSLETTER please write to: ETVC

P. O. Box 6486
San Francisco, CA 94101

Information on rates and terms available on request to the above address.

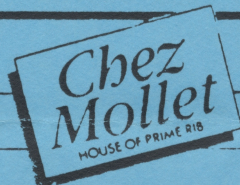


Rozsa Electrolysis Clinic

Mary Margaret Rozsa, R.E. Director

Permanent Hair Removal for Men & Women
by Appointment

The Medical Center
100 O'Connor Dr., Suite 28A
San Jose, CA 95128 (408) 292-3133



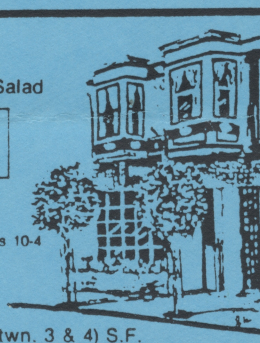
SUNDAY & MONDAY
Prime Rib
Dinner
Soup or Salad
\$9.95

EVERY TUESDAY
N.Y. Steak
Dinner
Soup or Salad
\$9.95

Open For Lunch
Regular Dinners
Include Soup & Salad

Newly Renovated
Banquet Room
for Up To 100 People

Brunch On The
Garden Patio
Sat., Sun. & Holidays 10-4
Reservations
Recommended
(415)495-4527
527 BRYANT (Btwn. 3 & 4) S.F.



ETVC NEWS (continued from p. 1)

were having in coming to grips with his cross-dressing. Please let any officer know if you would be interested in participating in this or have ideas on how to structure and organize it.

ETVC "Hot" Tip Sheets

The ETVC Hot Tip Sheet is a collection of places to go and people to see for such things as clothing, shoes, electrolysis, makeup, wigs, cosmetics and much more. The Tip Sheet debuted at the August meeting and is available to all members of ETVC. There is already an addendum to the Tip Sheet also. Please pick up your ETVC Tip Sheets at the monthly social meetings at the Chez Mollet.

To keep the Tip Sheet up to date and even more comprehensive, there are blank sheets available with which you can suggest additions or changes to the present listings. All members and friends are strongly encouraged to send us your contributions to the Tip Sheet. Our aim is to make it the most comprehensive, up to date and useful guide to services and places to go for TV's and TS's in northern
(continued next column)

California. With your help and input, the Tip Sheet can become a valuable resource for all of us. Whether you have a place to add to the list or want to update some of the information already there, please send us your contributions today. Thanks!

TREASURER'S REPORT

Our assets currently stand at \$306 in our bank account and \$100 of stamped envelopes for forthcoming newsletters. The slight improvement in our financial position is due to the 15 new memberships sold at the August and September parties (we now have a total of 68 paid members) and the \$79 raised at the August party. The September party showed a profit of \$3.10.

Our First Monthly Raffle

Our first monthly raffle/prize drawing was held at the September social and lucky Sheryl won the major prize -- a lovely blue plaid lambs wool shawl. Other raffle prize winners were Joanna, Monica, Linda and Lisa. Congratulations, ladies! All who attend our meetings get one raffle ticket free. More chances on raffle tickets are available at 4 for \$1.00.