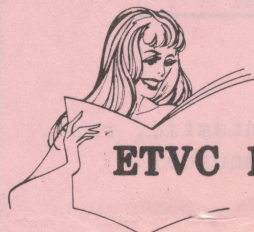


Educational TV Channel Newsletter

VOLUME FOUR, NUMBER 5

MARCH - APRIL, 1986



ETVC News

ALL KINDS OF GOOD STUFF GOING ON!

The newsletter transformation continues.... Hope you're liking it. If you have material for the newsletter, send it to Karin Ulsted, ETVC Newsletter Editor, PO Box 53192, San Jose, CA 95153. Of course, we reserve the right to edit everything, and we cannot return your submissions.

In This Issue

Some very good work was submitted recently. See Suzanne's review of Susan Brownmiller's "Femininity" on page 6. Everyone will find something of interest in it. Sharon, of "Sharon's Hints and Tips" fame, sent in a long piece on hormones and endocrine management. Highlights are on page 7, and she's invited people to send for complete copies if you're so inclined. Gloria checked in with good information on computer networks for genderfolk-- also on page 7. Thanks for the great contributions ladies.

And don't forget to read up on the March and April socials on page 2. The WHOLE calendar is on page 3...everything you need to know about who-what-when-where.

It's That Time of the Year

ETVC Officer elections are coming up. Nominations will be made at the social on April 24th, and elections will be at the May 29th social. Now's your chance to give something back. Be an ETVC officer.

> > > Even MORE News on Page 5...



The View From the Chair

KIM'S KORNER

Speaking of officers....

In case you haven't yet met the current ETVC Officers, let me reintroduce them to you:

- Coordinator. Kim
- Treasurer. Nancy Ann
- Secretary. Jo-An
- Social Committee . . . Vanessa & Fifi
- Outreach Committee . . Barbara and Diahanna

The qualifications and responsibilities of ETVC officers are described in the Bylaws. Copies of the Bylaws are available at all ETVC socials.

At the April 24th social and general meeting, we will have nominations for the 1986-87 ETVC Officers. New officers will be elected at the May 29th social and general meeting. All the officer positions are open. I invite and encourage you to seek an elected position.

During the month of June, the outgoing officers will work closely with the new officers to make as smooth a transition as possible to the new administration.

As we enter the 5th year of ETVC, we find ourselves to be the leading West Coast gender organization. This is not an accident. It is the result of people like yourself, who simply decided that ETVC was worthwhile.

I ask you now to decide to help sustain and extend the vitality, respect, and pride of ETVC by becoming an ETVC Officer.



ETVC

Parties, Meetings & Social Events

PLEASE NOTE:

Unless otherwise noted, all official ETVC meetings/parties are held the last Thursday of each month from 8pm to 12 midnight at the Chez Mollet restaurant, 527 Bryant St. in San Francisco (see map & directions on p. 4). If you are planning to have dinner at the Chez, the management requests that you make reservations by calling the restaurant at 415/495-4527. Though you can usually eat dinner in the back room where we hold our meetings (tables in our meeting room are usually set for dinner), no food will be ordered or served after 10pm.

For the dates, times or locations of all other ETVC-sponsored events, Support Group meetings, or functions, please see the Calendar on p. 5, read the party/event descriptions below or ask any member of the ETVC Executive Committee at the next party.

**** PARTIES ** FUN ** SOCIAL EVENTS ** GOOD TIMES ****

Easter Parade At The Chez
March 27th

Move over Macy's! The real Easter Parade will happen at the Chez Mollet on Thursday evening, March 27th.

That's right! Time to slip into the soft pastels, the dashing florals, yummy Spring bonnets, dainty white gloves, and silky ribbons. There could even be some bunny tails and big ears!

The social committee has done it again--- they're planning an Easter Parade, and will be giving away prizes in several categories of fashion. Of course, "fashion" in ETVC at the Chez Mollet means anything goes! The possibilities are practically endless: chic, daring, proper, clever, smart, bold, stylish, ingenuous.....and on and on.

WARNING: If you like chocolate, don't wear white! And bring your Wisk!

So, bunny hop to the Chez Mollet on Thursday March 27th around 8:00 PM. Member admission is \$4, and \$6 for non-members. Bring your mother.

There's also great rabbit food served at the Chez Mollet hutch, 527 Bryant Street, San Francisco. Call 415-495-4527 for reservations.

HELP WANTED!!!

Social Workers. Contact Vanessa!

Bizzarrrrre Bazzzzzaar !!!
April 24th

Bizarre: Odd, eccentric, fantastic, rare, strange, curious, unusual.

Bazaar: Marketplace.

Yes, folks! Step right up. But don't trip on those spikes on the way to the ring toss. Ring toss? OK, would you believe a garter toss? Would you believe "Pin the tail on Jerry Falwell?" How about "Guess my height, weight, and sex?"

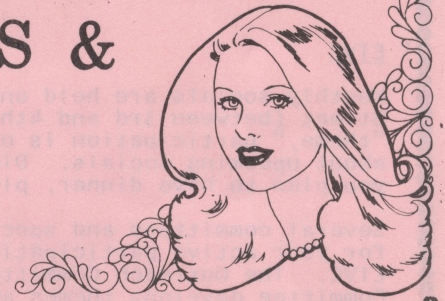
To be perfectly honest, the hallucinations for this event haven't all been tallied. But Vanessa and her crew are sure to come up with fun 'n games that will be, well... bizarre!

This promises to be a great fun social-- lots of opportunities to network, meet people, and have a good time. So, be there: Thursday, April 24, starting about 8:00 PM. Admission is \$5 for members, and \$8 for non-members.

All this happens, of course, at the Chez Mollet, 527 Bryant, San Francisco. Come early for a leisurely dinner. Phone the Chez at 415-495-4527 for reservations.

And guess what? For those of you who are still a bit allergic to daylight, this is the LAST social before clocks spring forward and we "save" daylight. Now that's REALLY bizarre!

The ETVC Newsletter is published in February, April, June, August, October and December. ETVC is a membership-based organization with the purpose of serving the social, educational, and recreational needs of gender-challenged people of either sex. Membership is also open to spouses, significant others, family members, friends, practitioners in the helping professions, and serious researchers. For details about ETVC programs, membership, newsletter subscriptions and classifieds, please write: ETVC Secretary, PO Box 6486, San Francisco, CA 94101. Or call 408-227-9490. Send material for newsletter publication to: Karin Ulsted, ETVC Newsletter Editor, PO Box 53192, San Jose, CA 95153. We reserve the right to edit all submissions. Unsolicited material cannot be returned.



TV/TS/TG GROUPS & ACTIVITIES

A CALENDAR OF EVENTS

DATE --- WHO --- WHAT --- WHERE --- OTHER INFORMATION ---

MARCH

4	Pac Ctr	TS Support	Berkeley	415-841-6224...Meets 7:30-10 PM.
5 >>>>	E T V C	Sig Others Support	TBD	408-227-9490...Meets 8-10 PM.
5	Pac Ctr	Open Rap	Berkeley	415-841-6224...Meets 7:30-10 PM.
6	GIA	TG Support	San Francisco	415-467-5285 or 415-431-1221 (days).
7	GGA	Social	San Jose	415-763-6185...Starts at 8 PM.
7	GGA	Social	Santa Rosa	707-575-0606 after 6PM.
8 >>>>	E T V C	Executive Committee	Richmond	408-243-3919...Starts at 8 PM.
8	GGA	Social	Sacramento	916-456-1885 or 916-371-8491.
11 >>>>	E T V C	Social Committee	Foster City	408-227-9490...Starts at 7:30 PM.
11	Pac Ctr	TS Support	Berkeley	415-841-6224...Meets 7:30-10 PM.
13	GIA	TG Support	San Francisco	415-467-5285 or 415-431-1221 (days).
14 >>>>	E T V C	Poker Social	San Francisco	408-227-9490...Starts at 8 PM.
14	- - -	Christian Disc Grp	San Jose	Please See Calendar Notes.
15 >>>>	E T V C	Outreach Committee	San Francisco	415-665-5216...Starts at 12:30 PM.
15	SFSI	Cocktail Benefit	San Francisco	415-665-5216...beginning at 8 PM.
18	Pac Ctr	TS Support	Berkeley	415-841-6224...Meets 7:30-10 PM.
19	Pac Ctr	Open Rap	Berkeley	415-841-6224...Meets 7:30-10 PM.
20 >>>>	E T V C	Couples Social	TBD	408-227-9490...Meets 8-11 PM.
20	GIA	TG Support	San Francisco	415-467-5285 or 415-431-1221 (days).
21	MENSA	Karin Talks	Berkeley	408-227-9490...Starts at 8 PM.
21	GGA	Social	San Jose	415-763-6185...Starts at 8 PM.
21	GGA	Social	Santa Rosa	707-575-0606 after 6PM.
25	Pac Ctr	TS Support	Berkeley	415-841-6224...Meets 7:30-10 PM.
27 >>>>	E T V C	March Social	Chez Mollet/SF	408-227-9490...Meets 8-Midnite.
27	GIA	TG Support	San Francisco	415-467-5285 or 415-431-1221 (days).
28	Pac Ctr	Open Rap	Berkeley	415-841-6224...Meets 7:30-10 PM.
28	- - -	Christian Disc Grp	San Jose	Please See Calendar Notes.

APRIL

1	Pac Ctr	TS Support	Berkeley	415-841-6224...Meets 7:30-10 PM.
2 >>>>	E T V C	Sig Others Support	TBD	408-227-9490...Meets 8-10 PM.
2	Pac Ctr	Open Rap	Berkeley	415-841-6224...Meets 7:30-10 PM.
3	GIA	TG Support	San Francisco	415-467-5285 or 415-431-1221 (days).
4	GGA	Social	San Jose	415-763-6185...Starts at 8 PM.
4	GGA	Social	Santa Rosa	707-575-0606 after 6PM.
8 >>>>	E T V C	Social Committee	Foster City	408-227-9490...Starts at 7:30 PM.
8	Pac Ctr	TS Support	Berkeley	415-841-6224...Meets 7:30-10 PM.
10	GIA	TG Support	San Francisco	415-467-5285 or 415-431-1221 (days).
11 >>>>	E T V C	Poker Social	San Francisco	408-227-9490...Starts at 8 PM.
11	- - -	Christian Disc Grp	San Jose	Please See Calendar Notes.
12 >>>>	E T V C	Executive Committee	San Francisco	408-243-3919...Starts at 8 PM.
12	GGA	Social	Sacramento	916-456-1885 or 916-371-8491.
15	Pac Ctr	TS Support	Berkeley	415-841-6224...Meets 7:30-10 PM.
16	Pac Ctr	Open Rap	Berkeley	415-841-6224...Meets 7:30-10 PM.
17 >>>>	E T V C	Couples Social	TBD	408-227-9490...Meets 8-11 PM.
17	GIA	TG Support	San Francisco	415-467-5285 or 415-431-1221 (days).
18	GGA	Social	San Jose	415-763-6185...Starts at 8 PM.
18	GGA	Social	Santa Rosa	707-575-0606 after 6PM.
19 >>>>	E T V C	Outreach Committee	San Francisco	415-665-5216...Starts at 12:30 PM.
22	Pac Ctr	TS Support	Berkeley	415-841-6224...Meets 7:30-10 PM.
24 >>>>	E T V C	April Social	Chez Mollet/SF	408-227-9490...Meets 8-Midnite.
24	GIA	TG Support	San Francisco	415-467-5285 or 415-431-1221 (days).
25	Pac Ctr	Open Rap	Berkeley	415-841-6224...Meets 7:30-10 PM.
25	- - -	Christian Disc Grp	San Jose	Please See Calendar Notes.
29	Pac Ctr	TS Support	Berkeley	415-841-6224...Meets 7:30-10 PM.

A CALENDAR OF EVENTS

CALENDAR NOTES

ETVC

Monthly socials are held on the last Thursday of each month at Chez Mollet Restaurant, 527 Bryant Street (between 3rd and 4th), San Francisco. Non-members are welcome. While there is usually a "theme," participation is optional, as there is no particular dress code. See page 2 for details about upcoming socials. Dining and cocktails are available. Dinners are served until 10 PM. If you plan to have dinner, please phone Chez Mollet at 415-495-4527 for table reservations.

Several committees and special interest groups serve the needs of members and provide opportunities for your active participation in ETVC. A five-person Executive Board sets the major direction for ETVC. The Outreach Committee promotes gender awareness in the public community. The Social Committee develops themes and manages the logistics of social events. And the Hostess Committee provides new members with an orientation to ETVC. Anyone who is in a relationship with a gender-challenged person will find support in an active Significant Others Support (SOS) Group, and a Couples Social Group. Both meet monthly. A Poker Social meets on the second Friday of each month.

See the calendar of events for meeting information. If you need more information, please use the phone numbers listed on the calendar, or make inquiries at any ETVC social.

Other Gender-Support Groups

ETVC provides the following information solely as a service to the gender community. Since we are dependent on these organizations to keep us up to date, the accuracy of the information is not guaranteed. Current known schedules and phone numbers are listed on the calendar page.

The GGA (Gateway Gender Alliance) is a national gender support organization with San Jose, Santa Rosa, and Sacramento chapters. In addition to the listed phone numbers on the calendar page, you may also write: GGA, 484 Lake Park Avenue #427, Oakland, CA 94610.

Gender Identity Anonymous (GIA) is a recently formed transgender support group. GIA meets in the Science of Mind Room at 3255 Balboa Street (near 34th Avenue), San Francisco.

The Bay Area Mensa SEXYG is a 2500 member special interest group affiliated with the national Mensa organization. Programs vary. Call 415-588-9145 for membership information and current programs.

The Pacific Center for Human Growth is a counseling-oriented growth center that sponsors drop-in gender support groups as a part of their diverse human services program. The center is located at 2712 Telegraph Avenue, Berkeley, CA 94705.

The San Francisco Sex Information Switchboard (SFSI) offers factual, high-quality, non-judgemental sex information to any caller. The switchboard operates Monday through Friday, 3:00 PM to 9:00 PM. The telephone number is 415-665-7300. All conversations are confidential and the service is free.

A gender-positive Christian Discussion Group now meets on the second and fourth Friday of the month at the New Community of Faith Church, 6350 Rainbow Drive, San Jose, at 8:00 PM. A phone number or other information is currently unavailable for this non-affiliated group. Have faith, and show up!

WORDS IN THE PUZZLE

AVON	EYESHADOW
COLDCREAM	FOUNDATION
COVERGIRL	LIPGLOSS
EYELINER	LIPLINER
LIPSTICK	POWDER
MABELINE	REVLON
MARYKAYE	ROUGE
MASCARA	WIG
MERLENORMAN	
MOISTURIZER	
PERFUME	

T W K N I P W P E R F U M E D Q H A G F
 I N A C I Y F I W D L L F I R M M U N E
 Y O W U I W E A C S C L M O M P A Y J O
 C I P L R T O C O V E R G I R L B R E U
 M T M C J I S D R M I K S W A X E E G S
 F A O B W O P P A J U O K D D E L V U M
 E D I I T N U Q I H G S M V M M I L O A
 A N S I U W C I M L S D S S N A N O R J
 G U T Q O D L T I Y Y E H W A E E N V B
 T O U M O R O N V C L O Y Y G R U F K L
 R F R M K N O E Y E L I N E R C Q J A Q
 U O I Y G V R R Y V C B M R K D M B R W
 T W Z N A M R O N E L R E M M L S M A G
 B X E A S S O L G P I L P A N O V X C E
 X L R A R L X P O D F O S B X C T W S B
 V U X W V B K U P X W C U R Q V E K A K
 A G O N I J P T V D A R B K E F G S M W
 H N Q C F G F J E R U P U L J T T N M K
 H A Y M O J E R A R H M A R Y K A Y E B
 I N T L I P L I N E R R O K J H U H N S

Answer in May & June issue

Even MORE News is Here.....

About Membership Dues

At the February social and general meeting on Feb 27th, a vote will be taken to raise annual membership dues from \$7 to \$10, effective June 1st. So, for the price of three gallons of gas, or two drinks, we'll decide whether or not to keep this super organization moving ahead. No doubt in anyone's mind about that!!! And remember: You have to be at the social to vote.

Outreach News

Outreach has been VERRRY busy the past few months. They've published a very informative and useful pamphlet on "Transvestism." Get several copies to use as ways to inform the uninformed or misinformed. Special thanks to Jan W and Laura for their hard work on this project.....a whole series of public presentations have been done in recent months: SF State, UC Med Center, radio and TV (television, silly) and so on. Karin is scheduled to present at the March 21 Bay Area Mensa meeting in Berkeley....Outreach is responding to media presentations of the gender community. If you notice something along these lines-- positive or negative, let us know....Send info to ETVC Outreach, PO Box 6486, San Francisco, CA 94101. And finally, we need your help. There are many ways to do outreach. Writing, talking, presenting, answering correspondence. You are even doing outreach when you're out in public as a transgendered person. So, look good! However, much of the work involves behind-the-scenes activity, so you don't necessarily have to be on radio, television, or "out." Contact Barbara at 415-665-5216. She'll be glad to get you started.

A Raffle Is Coming! A Raffle Is Coming!

Yes! At the May 29th social (which is also Election Night), there will be a raffle. Cathy is coordinating this and is seeking commitments from people to make donations of items to be used as prizes. This sounds great! She already reports several items to be donated. Another chance to let your imagination run wild (sort of!) and help ETVC pay its bills. Talk with Cathy about this at any ETVC social event.

And More News Here.....

And the Winner Is....

Barbara Ann!!! Did you catch her stunning performance at the December Cotillion? No surprise here that she was named Miss ETVC. What a queenly smile! Congratulations!!! Congratulations too, to the lovely runner-ups-- Nancy Ann and Lynne, and finalists Gloria, Charlotte, Phyllis, Terri, Vanessa, Sheila, and Jo-An. Thanks also to our fine judges, Pauline, Lisa, Donna (from Dressing Up), and Andi-- Miss ETVC, 1985.

ETVC Mail Order Library

ETVC is developing a mail-order library of printed items of interest to the gender community. For a list of available items and ordering information, write: ETVC Librarian, POB 6486, San Francisco, 94101. We are also accepting material at the same address.

Pssst! Wanna' Travel?

Outreach Institute is planning their annual gender extravaganza October 17-26, 1986, in Provincetown (near Beantown), Mass. Check with Karin at 408-227-9490, for more info.

And NEXT March (1987, that is) there will be a national convention in Chicago. Chicago Bares All!!! The International Foundation for Gender Education is the sponsor, with Tiffany Club the major coordinator. Most gender organizations have named reps to bring all this together. Our rep is Nancy Ann. Check with her if you're interested in assisting with this major event.

You're Invited!

Saturday, March 15, 8:00 PM to ????
A San Francisco Sex Information (SFSI) Cock-tail Benefit. At Barbara and Judy's place. Call either of them at 415-665-5216 for directions. Sliding scale donations of \$10-\$5 are requested. Should be a lot of interesting people at this one!

As Scoop would say, "And that's the news...."

BOOK REVIEW

Brownmiller, Susan.

Femininity.

New York: Linden Press/Simon & Schuster, 1984.
ISBN 0-671-24692-5. Hardbound, \$16.95.

New York: Ballantine Books/Random House, Inc., 1985.
ISBN 0-449-90142-4. Paperbound, \$7.95.



By definition, "femininity" may be defined as the quality or nature of the female sex. As the term is most commonly used, femininity is often regarded as the sum total of behavioral characteristics that is uniquely associated with women. Susan Brownmiller's recent book, Femininity, explores the subject in a readable, interesting, and comprehensive fashion.

Her point of view is that of a feminist, albeit not a militant one. She believes that the biological components of femininity are few and relatively unimportant, and that by far the more numerous and important of its many aspects are social, cultural, and historical in origin.

For example, Brownmiller asserts that in comparison with men, women seem excessively concerned with their physical appearance and adornment. The reason for this, the author believes, is because femininity enhances and exaggerates whatever biological differences exist between the sexes, and even goes so far as to create superficial differences where none exist biologically. All of this is done in response to a male-defined world, for masculine self-definition depends on feminine self-definition. In other words, there can only be differences if there are contrasts.

According to Brownmiller, femininity consists of vulnerability, a need for protection, compliance and avoidance of conflict, and, most importantly, modesty combined tastefully with exhibitionism. Femininity manifests itself in whimsical and emotional behavior that appears unseemly in men.

Generally, the author succeeds at awakening the reader's consciousness of the many facets which comprise feminine deportment and why each facet came to be. As a woman

(GG), she accepts some of these facets and rejects others. Wouldn't it be fine, she muses, if femininity's restrictive aspects were abandoned so that women could become all that they are capable of becoming?

The book includes a Prologue and Epilogue, and separate chapters on the following topics:

- * Hair
- * Clothes
- * Voice
- * Skin
- * Movement
- * Emotions
- * Ambition.

While not intended as a "How To" book for the TV/TS, Femininity nonetheless can be profitably read in that way because Brownmiller is especially good at identifying, defining, and explaining feminine gestures and mannerisms.

All in all, Femininity is well worth reading. Of value to the TV/TS, the book increases our understanding of the people we are and the people we would like to become.

Femininity is available in many public libraries (where I read it), and is also available in both hardbound and paperbound editions at many bookstores.

-- Suzanne

Great book! Great review! Ed.

We are what we pretend to be, so we must be careful about what we pretend to be.

--Kurt Vonnegut

Estrogen Therapy for MTF Transsexuals

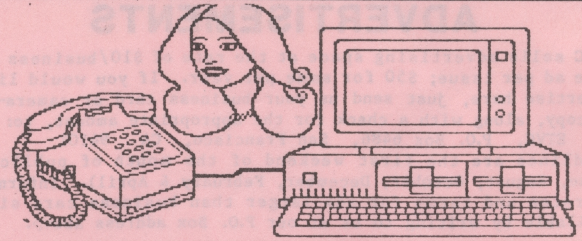
This is a very brief review of a lengthy and comprehensive piece of research by Sharon.

Estrogens control the shape, form, and function of our bodies, its organs, and processes. There are three basic estrogens: estradiol, estrone, and estriol. Prescriptions are usually given as Estinyl, Premarin, Provera, or as injections.

Persons with a history of migraine headaches or seizures, heart disease, high blood pressure, liver or kidney problems, diabetes, heavy smoking, alcohol use, obesity, or a family history of cancer, should be especially cautious in their use of estrogens.

When used with proper medical supervision, negative effects can be reduced or avoided.

Individuals who wish to study the entire work that Sharon produced are requested to send \$1 and a SASE to: Sharon Chambers, 505 Beth Drive, San Jose, CA 95111.)



High Tech TVs

No, not television, silly, but computer connections for the gender community. If you have a personal computer, or a terminal and a modem, you can plug into thousands of other gender people all over the country.

Commercial services such as "The Source" and "Compuserve," plus individually operated Bulletin Board Services now offer a wide variety of electronic mail information services.

In the SF Bay Area, there is Gendernet at 415-763-5173. Contact Gloria Peters at any ETVC social to get more info on how to get started, equipment, and so on.

MEMBERSHIP IN ETVC

Membership in ETVC

Membership in ETVC entitles you to:

- o a membership card for positive ETVC identification;
- o reduced admission to ETVC events;
- o a free subscription to the ETVC Newsletter;
- o reduced rates for other ETVC publications and services;
- o participation rights as a candidate and/or voter in ETVC elections;
- o participation rights in ETVC Executive Committee meetings;
- o the support and strength of the best gender community on the West Coast!

Membership records are held in strict confidence by ETVC. Membership cards must be shown upon entry at ETVC socials, or non-member admissions will be applied.

***** MAIL-IN MEMBERSHIP APPLICATION FORM *****

(Please print)

MAILING NAME: _____

MAILING ADDRESS: _____

ZIP: _____

PREFERRED NAME: _____

Remit \$4.00 by check or money order to: ETVC
P.O. Box 6486
San Francisco, CA 94101

ADVERTISEMENTS

ETVC sells advertising space at the rate of \$10/business card-size ad per issue; \$50 for same per year. If you would like to advertise here, just send us your business card or camera-ready ad copy, along with a check for the appropriate amount, to:

ETVC, P.O. Box 6486, San Francisco, CA 94101
Deadlines are the first weekend of the month of publication (June, August, October, December, February & April). Information on rates and terms for ads larger than business card size is available by writing to us at our P.O. Box address above.

The point is, if there were only one person in the world, it would be impossible for that person to be insane.

--Robert Pirsig

We are what we imagine. Our very existence consists in our imagination of ourselves. The greatest tragedy that can befall us is to go unimagined.

--N. Scott Momaday

- The Quigmans — Buddy Hickerson —



©1986 Los Angeles Times Syndicate

Bob's affinity for Madonna became a reckless obsession.

PERSONAL ADS

ETVC will accept personal ads from ETVC members at the rate of \$1 per 3 lines. We will not accept ads with a purely sexual objective. Send ad copy and a check for the appropriate amount to:

ETVC, P.O. Box 6486, San Francisco, CA 94101.
Deadlines are the first weekend of the month of publication (June, August, October, December, February & April). Information on rates and terms for ads other than the standard size is available on written request to our P.O. Box address above.

TV-TS TAPESTRY

P.O. Box 19
Wayland, MA 01778
(617) 358-5575



Tasteful, comprehensive, non-profit journal for all persons interested in cross-dressing and transsexualism

Single copy \$10, Subscription \$30 (\$40 1st class)
** With this ad \$10 of each subscription will be rebated to ETVC

STUDIO OF ELECTROLYSIS

PERMANENT HAIR REMOVAL

415-821-6643

MICHELE LACRETE, RE
ALAN SILVERMAN, RE

2120 MARKET STREET #102
SAN FRANCISCO, CA 94114

Clifford Drumeller RE, REI

THE PERMANENT HAIR REMOVAL CLINIC

22612 Foothill Blvd.
Suite 200C
Hayward, CA

(415) 581-1494
Four Blocks From
Hayward BART

HAIR TODAY, GONE TOMORROW

Permanent Hair Removal

GWEN CHELGREN
Registered Electrologist

1645 So. Bascom Ave., Suite C
Campbell, CA 95008

(408) 559-3500

FURTADO'S HIDEAWAY

Bed & Breakfast

Come taste the Quiet

Secluded 350 acre ranch

Complimentary wine ♦ Full breakfast

Private baths and spa

For complete privacy

3 room - 2 night minimum



707-895-3898 ♦ P.O. Box 650, Boonville, California 95415