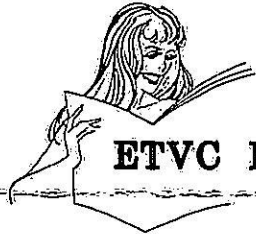


ETVC

Educational TV Channel Newsletter

VOLUME FIVE, NUMBER 4 JANUARY - FEBRUARY, 1987



ETVC News

IN THIS EDITION

Here we are. Just about 1987. And just about time for an exciting make-over by Herman. This is only one of the several HOT socials coming up. See page 2!

Last call for the Great Chicago Convention. See below.

This edition of the newsletter could very well be subtitled "The Forum." All of a sudden we got letters. We'd much rather print what you write, than invent something you may not even care about. So this is a good sign. Keep 'em coming!

ETVC WISHES YOU A VERY HAPPY 1987!

CONVENTION '87-- FINAL CALL

Getcher tickets? Major reservations? The clock is ticking for the start of THE GREAT CHICAGO CONVENTION '87-- the international gender event of the year!

Of course, you can decide to go at the last minute. But things really go easier (and cheaper) if you do some forward planning.

People are leaving on several different flights on different days. So chances are good that you can team up with a friend!

Call Nancy Ann at 415-647-7970 for the last word on CONVENTION '87.



The View

From the Chair

KIM'S KORNER

ETVC- 1989: I CAN SEE IT NOW!!!

Imagine 1,000 transvestites, transsexuals, significant others, and friends having a glorious weekend convention at Moscone Hall in San Francisco! Imagine a champagne brunch at the St. Francis! Imagine a seafood banquet at Alioto's-on-the-wharf!

Yes, this is the I.F.G.E. National Gender Convention, to be held in March, 1989. The first I.F.G.E. National Gender Convention will be in Chicago this March. ETVC will propose to host the 1989 convention in San Francisco.

Advance planning is critical to the success of this event. We need your help. Here are some ways for you to be involved:

- Join the Hostess Committee. Hospitality is the lotion that smooths the rough spots of any event. See Kim or Lorraine.
- Outreach will be creating a terrific convention program. Contact Gloria.
- Socials turn conventions into celebrations. And this is sure to be a celebration! Talk with Sheila or Vanessa.
- Leadership: Elections are only a few months away, so now's the time to decide to run for office. We will be voting for the positions of Coordinator, Secretary, Treasurer, and Social and Outreach Chairpersons. I encourage all of you to run for office and become involved in ETVC by being a member of an ETVC Committee.

Make 1987 your year to keep ETVC at the top of gender organizations across the country!



ETVC

Parties,
Meetings &
Social Events

NEXT SOCIAL COMMITTEE MEETINGS WILL BE ON:

TUESDAY, JANUARY 13,
and
TUESDAY, FEBRUARY 10.

CHECK WITH SHEILA OR VANESSA FOR DETAILS!!!

Saturday, January 10-- Make-Overs by Herman, Social, and Dinner.

All of this starts at 2:00 PM, Saturday afternoon at the Chez Mollet. Herman will work his magic on makeovers and wig styling. By the time Happy Hour comes, we'll be dazzling! And by 8:00 o'clock, everyone will be ready for a wonderful Chez Mollet dinner. Sure beats watching "Wonderful World of Bowling."

For best results, come "bare-faced." There will be space to change clothes, so don't let logistic concerns deter you. It isn't often that we have the chance to sit with a master of his art. Those who know say that Herman is definitely a master.

There will also be a wig auction. So, if you've been wanting a noodoo, here's your chance to get a super one for what promises to be a very good price. PLUS: No-nonsense advice on how to wear it! (And I thought no-nonsense was pantyhose!)

The entire proceeds of the \$10 admission to this event will go to the San Francisco AIDS Foundation. (Bring your own makeup and a mirror.)

Thursday, January 29 -- Back To The 60's Social

I remember the 60's. Streetpeople. Miniskirts. Long straight hair. The Beatles. Assassinations. The Movement. A fiasco in Southeast Asia. Love-ins. Burning bras. (Good grief!) Woodstock. The Kennedy funerals. Jimi Hendrix. Twiggy. Volkswagen buses. Communes. Cuba. Gay liberation. Hot pants. Candles. Incense. Generation gaps. Charlie Manson. The Raiders in Oakland. Flower children. Right on! Far out!

Turn-in, turn-on, and drop-in to the Chez Mollet on Thursday, January 29, 8:00 PM.

\$3 for members; \$5 for non-members.

Thursday, February 26-- Fashion Show Social

Ever have the fantasy of being the Cosmo cover girl? How about Vogue? Or is being on the Sports Illustrated "swim team" more your style. Well, whatever your style, here's your chance to model your best stuff: The ETVC Fashion Show.

Each model will be allowed three outfits. Anything goes, from formal to Frederick's. (Is there a difference?) Contact Sheila or Vanessa if you'd like to model.

Also, if you'd like to buy/sell/swap clothes, bring them along. Of course, all this is at the Chez Mollet, beginning at 8:00 PM.

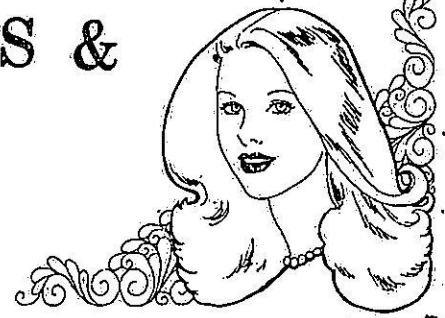
\$4 for members; \$6 for non-members.





TV/TS/TG GROUPS & ACTIVITIES

A CALENDAR OF EVENTS



DATE --- WHO --- WHAT --- WHERE --- OTHER INFORMATION ---

JANUARY, 1987

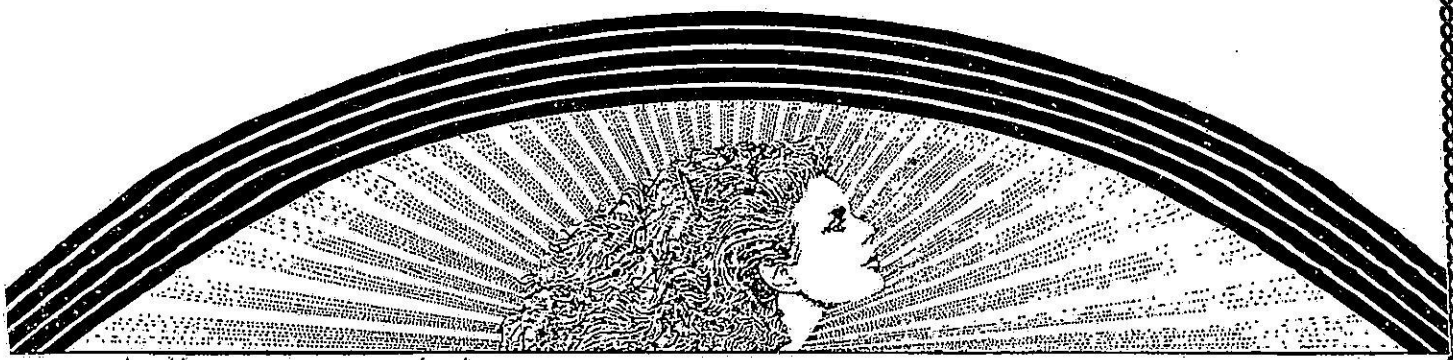
| | | | | | |
|----|------|---------|---------------------|-----------------|------------------------------------|
| 1 | | | | Happy New Year! | |
| 3 | >>>> | E T V C | Executive Committee | TBD | 408-243-3919... Starts at 8 PM. |
| 6 | >>>> | E T V C | Sig Others Support | Oakland | 415-647-7970... Meets 8-10 PM. |
| 6 | >>>> | E-T-V-C | Outreach Committee | Redwood City | 415-367-0986... Starts at 7:30 PM. |
| 6 | | Pac Ctr | TS Support | Berkeley | 415-841-6224... Meets 8-10 PM. |
| 7 | | Pac Ctr | Open Rap | Berkeley | 415-841-6224... Meets 8-10 PM. |
| 8 | | GIA | TG Support | San Francisco | 415-467-5285... Starts at 8 PM. |
| 9 | >>>> | E T V C | Poker Social | San Francisco | 415-647-7970... Starts at 8 PM. |
| 10 | >>>> | E T V C | Make-Over by Herman | Chez Mollet/SF | 415-647-7970... Starts at 2 PM. |
| 10 | >>>> | E T V C | Dinner Social | Chez Mollet/SF | 415-647-7970... Dinner at 8 PM. |
| 13 | >>>> | E T V C | Social Committee | TBD | 415-345-8752... Starts at 7:30 PM. |
| 13 | | Pac Ctr | TS Support | Berkeley | 415-841-6224... Meets 8-10 PM. |
| 14 | | Pac Ctr | Open Rap | Berkeley | 415-841-6224... Meets 8-10 PM. |
| 15 | >>>> | E T V C | Couples Social | Berkeley | 415-647-7970... Meets 8-11 PM. |
| 15 | | GIA | TG Support | San Francisco | 415-467-5285... Starts at 8 PM. |
| 16 | | RGA | Social | San Jose | 408-296-2599... Starts at 8 PM. |
| 20 | | Pac Ctr | TS Support | Berkeley | 415-841-6224... Meets 8-10 PM. |
| 22 | | GIA | TG Support | San Francisco | 415-467-5285... Starts at 8 PM. |
| 24 | | SGA | Social | Sacramento | 916-372-5451 or 916-371-8491. |
| 27 | | Pac Ctr | TS Support | Berkeley | 415-841-6224... Meets 8-10 PM. |
| 29 | >>>> | E T V C | January Social | Chez Mollet/SF | 415-345-8752... Meets 8-Midnite. |
| 29 | | GIA | TG Support | San Francisco | 415-467-5285... Starts at 8 PM. |
| 30 | | Pac Ctr | Open Rap | Berkeley | 415-841-6224... Meets 8-10 PM. |

FEBRUARY

| | | | | | |
|----|------|---------|------------------------------|----------------|------------------------------------|
| 3 | >>>> | E T V C | Sig Others Support | Berkeley | 415-647-7970... Meets 8-10 PM. |
| 3 | >>>> | E T V C | Outreach Committee | Redwood City | 415-367-0986... Starts at 7:30 PM. |
| 3 | | Pac Ctr | TS Support | Berkeley | 415-841-6224... Meets 8-10 PM. |
| 4 | | Pac Ctr | Open Rap | Berkeley | 415-841-6224... Meets 8-10 PM. |
| 5 | | GIA | TG Support | San Francisco | 415-467-5285... Starts at 8 PM. |
| 6 | | RGA | Social | San Jose | 408-296-2599... Starts at 8 PM. |
| 7 | >>>> | E T V C | Executive Committee | TBD | 408-243-3919... Starts at 8 PM. |
| 10 | >>>> | E T V C | Social Committee | TBD | 415-345-8752... Starts at 7:30 PM. |
| 10 | | Pac Ctr | TS Support | Berkeley | 415-841-6224... Meets 8-10 PM. |
| 12 | | GIA | TG Support | San Francisco | 415-467-5285... Starts at 8 PM. |
| 13 | >>>> | E-T-V-C | Poker Social | San Francisco | 415-647-7970... Starts at 8 PM. |
| 14 | | | HAPPY VALENTINE'S DAY | | |
| 17 | | Pac Ctr | TS Support | Berkeley | 415-841-6224... Meets 8-10 PM. |
| 18 | | Pac Ctr | Open Rap | Berkeley | 415-841-6224... Meets 8-10 PM. |
| 19 | >>>> | E T V C | Couples Social | Foster City | 415-647-7970... Meets 8-11 PM. |
| 19 | | GIA | TG Support | San Francisco | 415-467-5285 |
| 20 | | RGA | Social | San Jose | 408-296-2599... Starts at 8 PM. |
| 24 | | Pac Ctr | TS Support | Berkeley | 415-841-6224... Meets 8-10 PM. |
| 26 | >>>> | E T V C | February Social | Chez Mollet/SF | 415-345-8752... Meets 8-Midnite. |
| 27 | | Pac Ctr | Open Rap | Berkeley | 415-841-6224... Meets 8-10 PM. |
| 28 | | SGA | Social | Sacramento | 916-372-5451 or 916-371-8491. |

**** Don't forget -- coming up in March is the I.F.G.E. National Gender Convention. Make your reservations now to join us for an exciting experience. Come to Chicago and join the fun! ****

ETVC is a non-sexual, membership-based organization with the purpose of serving the educational, social, and recreational needs of gender-challenged people, their spouses, significant others, family members, friends, and professionals in the helping services. The ETVC Newsletter is published in February, April, June, August, October and December. Newsletter contents reflect the opinions of the contributors and the editor, and are not necessarily those of ETVC. Other organizations may reprint or reproduce portions of the newsletter for their members, provided ETVC is acknowledged. For details about ETVC programs, membership, newsletter subscriptions, and classifieds, please write: ETVC Secretary, PO Box 6486, San Francisco, CA 94101.



< < < REACHING OUT > > >

What's Happening?

The Outreach/Education Committee is currently working on several projects. We are always trying to expand the library and find better ways to share these materials among our members.

We are also working on ways to spread the word about ETVC to both the general public and the gender community. At this point we are concentrating our effort to get a feature article in one of the Bay Area newspapers. The purpose would be to generate a positive attitude about the gender community, and to reach the thousands of TVs and TSs who don't know about us.

We'd also like to update the ETVC "Tip Sheets" with places to shop, dine, or look for support.

All of these projects need helping hands. If you are interested in any of these, call Gloria at 415-367-0986.

NEXT OUTREACH COMMITTEE MEETINGS WILL BE ON:

TUESDAY, JANUARY 6
and
TUESDAY, FEBRUARY 3

Both in Redwood City

CHECK WITH GLORIA FOR DETAILS!!!

November Outreach Night

The "Outreach/Education Night" theme of our November social proved to be quite a success. Despite the shift to a Wednesday night, there was a strong turnout of 54 members and guests. People got to browse through the material we have collected for the library-- everything from magazines, to books, video tapes, catalogs, and articles.

Our Special Guest Speaker, Kim Stuart, told us about some of her experiences leading to her writing The Uninvited Dilemma. She also answered questions about the book and reactions to it.

WE'RE LOOKING FOR A FEW "GOOD" GIRLS

The Social Committee needs help and more creative ideas to keep our streak going.

We would like to express our appreciation to several members who have helped tremendously with our socials:

Martina has come to all of our meetings and has been an important part of planning and carrying out the details of recent events; Elsie has contributed ideas and provided the music for socials; Robyn and Terri put together the Influential Women Quiz that we all puzzled over at the Friendship Social; Susan has been very helpful with planning and decorations; Ginny has been an invaluable resource for ideas and inspiration for a long time..

As you can see, it takes many people to make the ETVC socials a success. We know that there are still many more ideas out there, so we encourage your participation.

Come to a Social Committee meeting-- it's only a few hours a month. You'll be surprised at how satisfying this can be. By sharing in the creative process and by nurturing ETVC, you will realize another dimension of your feminine self.

IN MEMORY

Our deepest sympathy is extended to the family and friends of Gene Forrest, a recent victim of AIDS.

Lady Gene was a very supportive member of ETVC and we shall miss her enthusiasm, ideas and dreams.

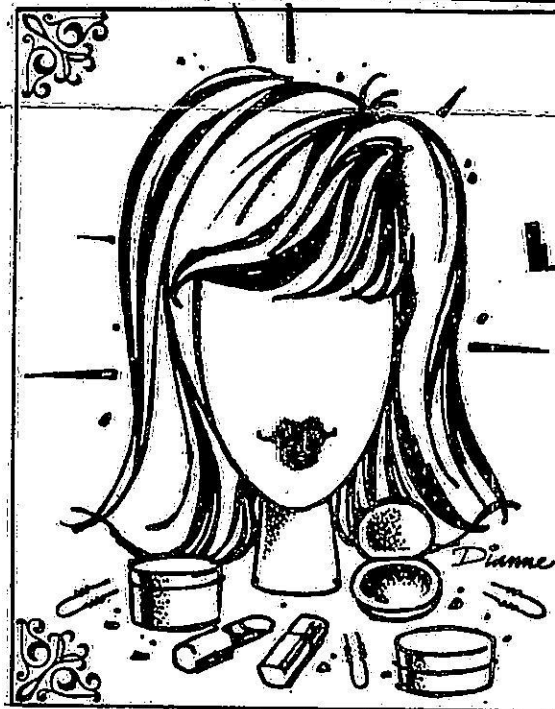
TRANSSEXUAL PAMPHLET IS HERE!

The Outreach Committee has just completed the ETVC Transsexual Pamphlet, which has been designed specifically to aid the pre-op transsexual. It includes many important facts and reference material to guide the transsexual along her way.

The pamphlet will be available at all ETVC socials, or may be obtained by sending a self addressed, stamped envelope to ETVC, P.O. Box 6486, San Francisco, CA 94101.

TIME OUT FOR OFFICIAL BUSINESS

The ETVC bank balance is \$1353, and we have 183 members now compared with 174 at the same time last year.



HERMAN LIVE AT THE CHEZ

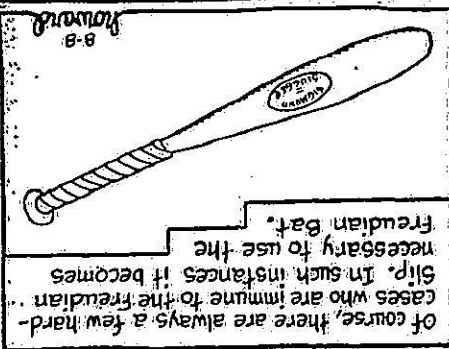
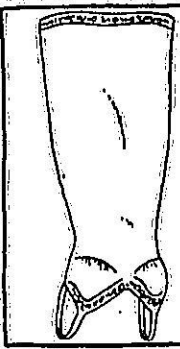
MAESTRO MAKEUP ARTIST
COUTURIER EXTRAORDINAIRE
HAIR! HAIR! HAIR!
HANDS-ON DEMONSTRATIONS!
WIG AUCTION!

ADMISSION \$10 • AIDS BENEFIT
SATURDAY, JANUARY 10th • 2PM
DO STAY FOR DINNER!
CHEZ MOLLET 527 BRYANT SF



SALLY'S CATALOG OF ESSENTIAL OFFICE ACCESSORIES
 Today's Products:
 "The Freudian Slip"

The mere wearing of this remarkable slip reduces the incidence of annoying sexual advances in the workplace. The revolutionary fabric from which it is made emits an undetectable vapor that suppresses the male libido.



Of course, there are always a few hard-cases who are immune to the Freudian Slip. In such instances it becomes necessary to use the Freudian Bat.

SALLY FORTH

By Greg Howard

(Apparently, the powers that be have a convention in mind. See Kim's corner. Ed.)

It is not clear to me what the powers that be have in mind for ETVC, but I feel that Outreach should be its raison d'être. Two years ago, I was not only in the closet, but knew of no one to talk to. Through my therapist, I learned of GGA and then of ETVC. Reaching people like myself is the most important thing that can be done, and all else is BS as far as I'm concerned.

I'm a TV, and my purpose in joining ETVC was to meet others like myself. I'm not terribly interested in the theme socials, where the 'themes' seem to interfere with the 'socials'. Nonetheless, I look at them as opportunities to go out to a 'safe' place. If and when I develop the skills and confidence to go out in public, I suspect my attendance at socials will diminish.

Dear Newsletter Editor,
 If you would like a copy, send a SASE to: ETVC Newsletter Editor, PO Box 53192, San Jose, CA 95153.

We received a lengthy (three-page!) review of Kim Stuart's book, The Uninvited Dilemma: A Question of Gender, from Suzanne. Ordinarily, we can edit what we get and still have the author's ideas flow through. In this case such an effort would have diminished the value of the piece. Nonetheless, the review raises difficult questions, has sparked controversy in some quarters, and is therefore worth reading.

We understand you haven't appeared dressed at an ETVC social. Write and tell us how it was for you when you do it! *****

Dear Jane,
 Thanks for sharing your self with us. Suggest SOS to your wife. Check out the other "normals" at the Couple's Social. There's a lot of support for both of you here.

Dear ETVC:
 I'm so excited! As you can see, I've rented a mailbox, so now I can start receiving TV mail without fear of discovery. At this stage I am discovering the joy of my girl self. She isn't an intruder anymore. She is me!

I am also discovering that my male self doesn't have to feel threatened by her. I can play football AND wear a dress. I just can't do them at the same time. Each self has its own time and place. There's much more I want to say-- and to hear. I am hungering for conversation with other TVs, and there is so much to learn. I don't even know how to pluck my eyebrows! The trick will be in finding the time. My wife is totally opposed to my dressing. So I will have to be prudent about how I make time. Somehow though, I'm going to meet and dress. I just will!

ADVERTISEMENTS

ETVC sells advertising space at the rate of \$10/business card-size ad per issue; \$50 for same per year. If you would like to advertise here, just send us your business card or camera-ready ad copy, along with a check for the appropriate amount, to:

ETVC, P.O. Box 6486, San Francisco, CA 94101

Deadlines are the first weekend of the month of publication (June, August, October, December, February & April). Information on rates and terms for ads larger than business card size is available by writing to us at our P.O. Box address above.

NEW BREASTS NEW

Prostheses you will believe.
Sensational mastectomy Bras,
Bathing Suits, and classic TV
books, 50¢ for information.
Breast Buyers Guide still \$3.00

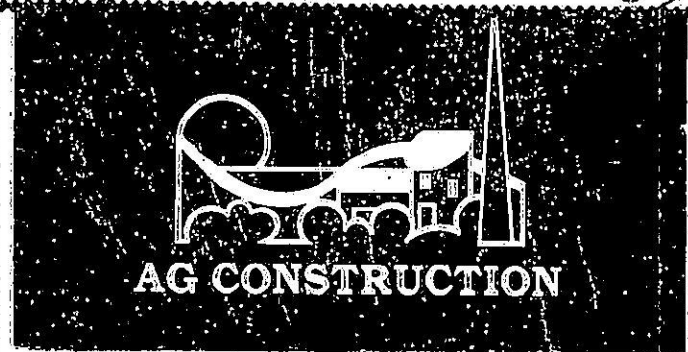
Ken/Kathy Pool

P. O. Box 10031

Berkeley, CA 94709

20%
ALL OFF

THRU
FEB 15
87



AG CONSTRUCTION

General Contractor • License No. 483600

(707) 575-3657

ANGELO M. SENDE LAS, R.E.



Permanent Hair Removal

ANGELO'S BOUTIQUE & HAIR
STYLING SALON FOR MEN & WOMEN

PHONE
879-3628

600 ELLIS STREET
SAN FRANCISCO, CA

PERSONAL AD

House to share with responsible non-smoker. Located in San Jose near THE PRUNYARD; smart garden setting on quiet street. \$400/Mo. plus 1/2 utilities gets you room, run of house, washer/dryer, kitchen and private bath. For more information, leave a message at (415) 325-9735.

PERSONAL ADS

ETVC will accept personal ads from ETVC members at the rate of \$1 per 3 lines. We will not accept ads with a purely sexual objective. Send ad copy and a check for the appropriate amount to:

ETVC, P.O. Box 6486, San Francisco, CA 94101.

Deadlines are the first weekend of the month of publication (June, August, October, December, February & April). Information on rates and terms for ads other than the standard size is available on written request to our P.O. Box address above.

TV-TS TAPESTRY

P.O. Box 19

Wayland, MA 01778

(617) 358-5575



Tasteful, comprehensive, non-profit journal for all persons interested in cross-dressing and transsexualism

Single copy \$10, Subscription \$30 (\$40 1st class.)

** With this ad \$10 of each subscription will be rebated to ETVC

Clifford Drumeller RE, REI

THE PERMANENT HAIR REMOVAL CLINIC

22612 Foothill Blvd.
Suite 200C
Hayward, CA

(415) 581-1494
Four Blocks From
Hayward BART

Post Office Box 184
San Juan Capistrano, CA 92693-0184
(714) 496-J2CP (714) 496-5227

J2CP Information Services

J2CP Information Services provides information/referral services formerly provided by the Erickson Educational Foundation and JANUS Information Facility. J2CP Information Services is a separate entity and is not affiliated with either of its predecessors.

J2CP Information Services provides an information package consisting of pamphlets and literature concerning gender dysphoria syndrome, transsexualism and transvestism. This information package is available at a cost of \$25.00 to cover research, printing, postage and secretarial services. Additionally, J2CP Information Services will attempt to provide referrals to reputable counselors, psychotherapists, or gender programs, and peer groups near your home.

Certified checks or Money Orders should be made payable to J2CP Information Services. Please specify whether you are male-to-female, female-to-male, or transvestite when writing. If transsexual, please provide your place of birth.

ORGANIZATION NOTES

ETVC

Regularly scheduled socials, special interest groups, and committee activities serve the needs of members and provide opportunities for member activities in ETVC. A five-person Executive Board sets the major direction for ETVC. The Education & Outreach Committee develops and delivers public and internal programs to promote gender choice. The Social Committee develops social themes and handles event logistics. Our programs depend on member participation to create and administer them. We solicit your ideas and active assistance in making all this possible.

A monthly social meeting is held on the last Thursday of each month at the Chez Mollet Restaurant, 527 Bryant Street (between 3rd and 4th), San Francisco. While there is usually a "theme," participation is optional, as there is no particular dress code. No-host cocktails and dining facilities are available. Dinners are served until 10 PM. If you plan to have dinner, please phone the Chez Mollet at 415-495-4527 for table reservations.

Other events include a monthly Saturday evening dinner, and a Poker Social on the second Friday of each month. Anyone who is in a relationship with a gender-challenged person will find helpful support in an active Significant Others Support (SOS) Group, and a Couples Social Group, both of which meet monthly.

All events are listed on the Calendar of Events on Page 3. Specific details on immediate events can be found on Page 2. For further information, please use the phone numbers listed on the calendar, or make inquiries at any ETVC social.

Other San Francisco Bay Area Gender Support Groups

ETVC provides this information as a service to the gender community, and does not judge the merit or quality of the programs. Current information is based on the most recent information available. Please check the Calendar of Events (Page 3) for current schedules and reference phone numbers.

Gender Identity Anonymous (GIA) is a non-judgemental transgender support group. It meets each Thursday at 8 PM in the Science of Mind Room, 3255 Balboa Street (at 34th Avenue), San Francisco.

The Pacific Center for Human Growth, a counseling-oriented growth center, sponsors drop-in support groups for transsexuals each Tuesday at 8:00 PM. All-inclusive gender support groups meet on the 1st and 3rd Wednesdays, and last Friday of the month at 8:00 PM. The Center is located at 2712 Telegraph Avenue, Berkeley.

The Rainbow Gender Association (RGA), formerly the San Jose GGA, meets on the 1st and 3rd Friday of the month at 8:00 PM at the New Community of Faith Church, 6350 Rainbow Drive, San Jose. RGA can also be contacted by writing: Rainbow Gender Association, POB 700730, San Jose, CA 95170.

Other organizations with on-going programs and services are located outside of the immediate San Francisco Bay Area. For a current list, send \$2.00 and a self-addressed stamped envelope to: Outreach Committee, c/o ETVC, PO Box 6486, San Francisco, CA 94101.

MEMBERSHIP IN ETVC

Membership in ETVC entitles you to:

- o a membership card for positive ETVC identification;
- o reduced admission to ETVC events;
- o a free subscription to the ETVC Newsletter;
- o reduced rates for other ETVC publications and services;
- o participation rights as a candidate and/or voter in ETVC elections;
- o participation rights in ETVC Executive Committee meetings;
- o the support and strength of the best gender community on the West Coast!

Membership records are held in strict confidence by ETVC. Membership cards must be shown upon entry at ETVC socials, or non-member admissions will be applied.

MAIL-IN MEMBERSHIP APPLICATION FORM

Please print!

MAILING NAME: _____

MAILING ADDRESS: _____

ZIP: _____

PREFERRED NAME: _____

Please remit \$5.00 by check or money order to: ETVC, PO Box 6486, San Francisco, CA 94101