



## Educational TV Channel Newsletter

Volume Four, Number 1

July - August, 1985

ETVC, P.O. Box 6486, San Francisco, CA 94101

### New Officers for 1985-86



### ETVC News

ing membership year of June 1985 thru May 1986. The new officers are:

COORDINATOR:	Kim
SECRETARY:	Jo-An
TREASURER:	Nancy Ann
OUTREACH COMMITTEE CO-CHAIRS:	Diahanna & Barbara
SOCIAL COMMITTEE CO-CHAIRS:	Vanessa & Fifi

Although not formally represented on the ExCom, the following two activities are now such an integral part of ETVC that they each have a chairperson:

HOSTESS COMMITTEE:	Andi
SIGNIFICANT OTHERS GROUP:	Arlene

Please welcome the new officers of ETVC and give them a helping hand by signing up for a committee and taking some time to get to know them at the next meeting. They are all very friendly and fun people to know and are most anxious to know what you like about ETVC and what you'd like to help make happen.

### IMPORTANT (don't forget!)

All 1984-85 memberships in ETVC expired on May 31st; the membership fee for June 1985 - May 1986 is now due. You will have to pay the nonmember admission fees for the parties until you renew your membership. Membership cards have been mailed to all those members who renewed at the May meeting. Please contact us immediately if you believe you have renewed but have not received your card.



### The View

### From the Chair

### "KIM'S KORNER"

A LOOK BACKWARD...AND FORWARD

I would like to take this opportunity to reflect on ETVC's accomplishments this past year.

- 1) Membership in ETVC more than **doubled** from last year to a total of 128 members;
- 2) A very effective "Hostess Committee" was formed and our charming hostesses (Phyllis, Andi, Linda, Terry, Vanessa, Charlotte, Diane + our officers) helped make ETVC a sociable place for us to meet.
- 3) The starting of 2 support groups: "Significant Others" and "Couples."
- 4) The introduction of a fabulous cotillion ball called "Miss ETVC" with a very lovely first Miss ETVC -- Andi.
- 5) Several successful outreach programs that ETVC members participated in:
  - o the HBO documentary aired in April called "What Sex Am I?" featuring Kathy, Diahanna, Joanne, Paula and several other ETVC members;
  - o Kathy & Diahanna were the "stars" of a KGO morning talk show on the subject of transvestism;
  - o the production of a small "intro to ETVC" card suitable for carrying in a purse and handing to potential members;
  - o a ton of correspondence answered by Robin, last year's Outreach Chair and unofficial Corresponding Secretary.
- 6) A spectacularly successful social calendar organized by Ginny & Nancy Ann including (in addition to the Miss ETVC Cotillion mentioned above) a fashion show; Mardi Gras; a Pajama & Lingerie Party; a Games Night plus several charming socials without specific themes but with lots of spirit and social warmth.

Continued on p. 6



\*\*\*\*\*



# ETVC

## Parties, Meetings & Social Events

**PLEASE NOTE:**

Unless otherwise noted, all official ETVC meetings/parties are held the last Thursday of each month from 8pm to 12 midnight at the Chez Mollet restaurant, 527 Bryant St. in San Francisco (see map & directions on p. 4). If you are planning to have dinner at the Chez, the management requests that you make reservations by calling the restaurant, 415/495-4527. Though you can usually eat dinner in the back room where we hold our meetings (tables in our meeting room are usually set for dinner), no food will be ordered or served after 10pm.

For the dates, times or locations of all other ETVC-sponsored events, Support Group meetings, or functions, please see the Calendar on p. 5, read the party/event descriptions below or ask any member of the ETVC Executive Committee at the next party.

**\*\* PARTIES \*\* FUN \*\* SOCIAL EVENTS \*\* GOOD TIMES \*\***

\*\*\*\*\*

**SUMMER SOCIAL**  
Thursday, July 25, 1985 8pm

**GLAMOROUS GAMS (LEGS CONTEST)**  
Thursday, August 29, 1985 8pm

Want to make new friends and renew old friendships with lovely and personable TVs and TSs? Well then, join us on Thursday, July 25th for a fun-filled evening with lots of pleasant surprises. Listen to some soft relaxing music and meet some "best friends" that you will make that evening. ETVC hostesses will help you break the ice with all those interesting people you've seen at the recent parties but haven't dared approach to introduce yourself to yet. The party starts at 8pm but the fun lasts all night long.

Fees for this social are \$3 for members and \$5 for nonmembers and guests.

**Special note:** all members attending this party will be asked to vote on an issue brought before the ExCom at their June 1st meeting: should ETVC buy and serve alcohol at any of its social events? Please read the article on p. 8 for a discussion of the pros and cons of this question.

\*\*\*\*\*  
**Significant Others Support Group**

### WE'RE GROWING!

The third meeting of the Significant Others Support Group was held on June 4th and we now have 11 interested people!

A "significant other" can be the wife, husband, lover, child, parent, sibling or friend of a TV/TS/TG who is NOT a TV/TS/TG him or herself. The support group provides a friendly, caring and understanding atmosphere in which we can share our deepest feelings and concerns in the strictest confidence.

Those of us who have been attending the group would like to encourage all "signi-  
(continued on next column)

Step aside Betty Grable. Get out your snazziest pantyhose and wear your highest hemline skirt because tonight we feature a leg watchers dream come true -- the first ETVC "Legs Contest." We are now taking applications from all interested ladies who would like to show off their glamorous gams. The panel of judges will have a very difficult time choosing the nicest pair of legs. The rules are simple: all contestants must wear pantyhose of a neutral color and closed toe black pumps with **no more than 3 inch heels.**

The excitement generated by this contest has already brought out a lot of contestants, so don't be left out! See Vanessa or Fifi at the July social to sign up (or write to our P.O. Box). Several prizes will be awarded and a "special" trophy is even being designed.

Fees are \$4 for members and \$6 for nonmembers and guests.

\*\*\*\*\*

ficant others" to come to our next meeting. It's a wonderful way to really learn that you are not alone and a comfortable, safe place to share both your troubles and your triumphs.

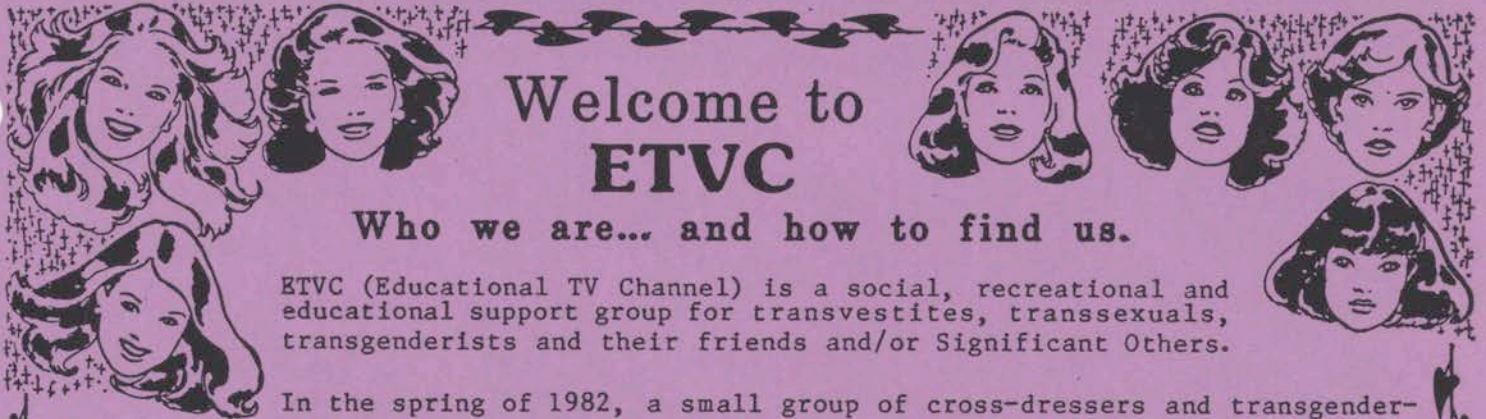
The group facilitator is Arlene, the Significant Other of one of our ETVC members. She can be reached at 415/928-3723 for the locations of the next two meetings which are scheduled for Tuesday, July 2 and August 6 at 8pm.

-- Jane

### Friday Night Poker

Welcome to another fun ETVC social event: "Friday Night Poker," hosted by Ginny and Nancy Ann the second Friday of each month. More players are wanted. Come join the action!





# Welcome to ETVC

Who we are... and how to find us.

ETVC (Educational TV Channel) is a social, recreational and educational support group for transvestites, transsexuals, transgenderists and their friends and/or Significant Others.

In the spring of 1982, a small group of cross-dressers and transgenderists in the San Francisco Bay area, wanting to create a safe social milieu for themselves, began getting together on a regular basis at various individuals' homes. We chose a name for our group (ETVC) and as word got around and more people started showing up at the gatherings, we established regular monthly socials at a San Francisco restaurant, the Chez Mollet. In less than a year, our "theme" parties were drawing an average of 40-60 people and ETVC had become established as one of the best places in the Bay area for TV's, TS's and TG's to go for a sociable night out.

Starting in 1983, we began to adopt a set of bylaws to provide a formal structure for the group. Under these Bylaws, ETVC is a membership organization (although non-members who share our interests are welcome to attend) wherein responsibility for coordinating its activities rests with a 5-member Executive Committee.

Since we exist to help meet the needs of TV's, TS's and TG's, we are delighted to welcome new people who share our interests to any of our regular meetings which take place the last Thursday of every month at the Chez Mollet restaurant, 527 Bryant St., San Francisco, CA from 8 pm to 12 midnight. Their specialty is French cuisine and reservations are usually advisable. Directions to the Chez Mollet are on the back.

We would like to encourage all our friends, new and old, to become members of ETVC. On the reverse is a mail-in membership form for your convenience. Anyone can also become a member at the door on the night of any ETVC function. Reprinted below is the Statement of Purpose and membership eligibility criteria from our Bylaws.

## STATEMENT OF PURPOSE

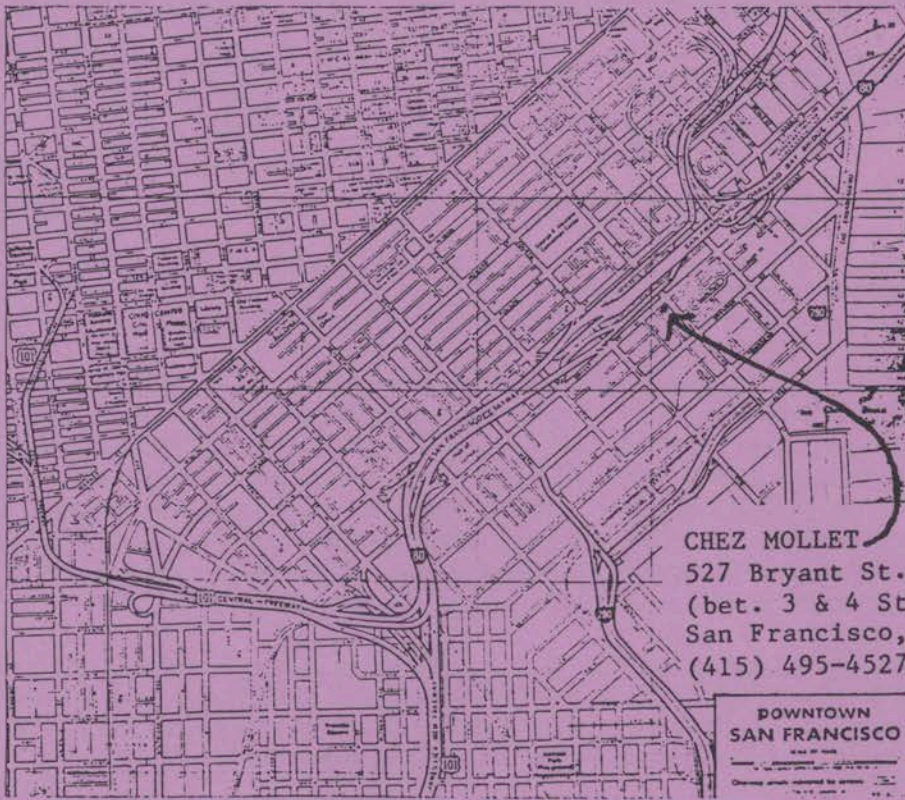
The purpose of the "Educational TV Channel" (hereinafter "ETVC") is two-fold: (1) to serve the educational, social and recreational needs of transvestites (either female or male), transsexuals (either female or male), and all other persons (either female or male) whose social role differs in any degree from that role considered to be appropriate for an individual of his or her genetic sex, and (2) to undertake educational activities intended to assist the general public in comprehending transvestism, transsexualism, and transgenderism.

## MEMBERSHIP (Eligibility)

Membership in ETVC is open to any person (male or female) who is 18 years of age or older and who believes that he or she is, or may be, a (1) transvestite, (2) transsexual, or (3) person whose social role differs in any degree from that role considered to be appropriate for an individual of his or her genetic sex. Membership is also open to (1) a spouse or significant other of one who is eligible for membership in ETVC under the preceding sentence, and (2) one who is 18 years of age or older and who has (a) a personal or professional interest in one or more persons who fall into one or more of the categories established in the preceding sentence, or (b) a personal or professional interest in transgenderism or gender dysphoria generally.

(BYLAWS adopted May 31, 1984)





### DIRECTIONS

**From the East Bay:**

Take I-80 or I-580 to across the Bay Bridge to the Fifth St. exit, turn left onto Fifth St. and left again onto Bryant St.

**From north of San Francisco:**

Follow US 101 across the Golden Gate Bridge and thru the city to I-80. Take the Fourth St. exit directly onto Bryant St. The Chez is straight ahead.

**From the South Bay:**

Take US 101 north to I-80 and the Fourth St. exit (as above). Alternatively, take I-280 to its end at Fourth St., cross over Fourth, go one block and take a left onto Third St. and go up 4 blocks to Bryant St.

### MEMBERSHIP IN ETVC

Under the Bylaws, the membership year runs from June 1 to May 31. An annual membership is \$7.00 when purchased between June 1 and November 30, and \$4.00 when purchased between December 1 and May 31, and offers the following benefits:

- 1) reduced rate for parties;
- 2) a membership card which facilitates your entrance into our parties;
- 3) a subscription to the ETVC Newsletter which is published bi-monthly in June, August, October, December, February and April of each membership year;
- 4) free or reduced cost for other ETVC publications and services;
- 5) a say in how ETVC is run for your benefit: a vote for the members of the Executive Committee at the May Annual Meeting and the right to attend meetings of the ExComm.;
- 6) provides ETVC with funds needed to continue growing as a stronger and more supportive organization, able to offer more benefits and services to its members.

\*\*\*\*\* MAIL-IN MEMBERSHIP APPLICATION FORM \*\*\*\*\*

(Please print)

MAILING NAME: \_\_\_\_\_

MAILING ADDRESS: \_\_\_\_\_

ZIP: \_\_\_\_\_

PREFERRED NAME: \_\_\_\_\_

Remit \$7.00 by check or money order to: ETVC  
P.O. Box 6486  
San Francisco, CA 94101

\*\*\*\*\*





# TV/TS/TG GROUPS & ACTIVITIES

## A CALENDAR OF EVENTS

for

JULY & AUGUST 1985

JULY

AUGUST

- |   |   |
|---|---|
| 2 - ETVC Significant Others Support Group | 2 - San Jose G.G.A.                       |
| 2 - Pacific Center TS Support Group 6pm * | 2 - Santa Rosa G.G.A.                     |
| 3 - Pacific Center TV/TS Rap Group        | 3 - ETVC ExCom meeting in Richmond        |
| 3 - Female-to-Male TS Group (San Jose) ** | 6 - ETVC Significant Others Support Group |
| 5 - Santa Rosa G.G.A.                     | 6 - Pacific Center TS Support Group 6pm   |
| 6 - ETVC ExCom meeting in S.F.            | 7 - Pacific Center TV/TS Rap Group        |
| 9 - Pacific Center TS Support Group 6pm   | 7 - Female-to-Male TS Group 7pm           |
| 10 - Female-to-Male TS Group 7pm          | 9 - ETVC Friday Night Poker (see p.2)     |
| 12 - Sacramento G.G.A.                    | 10 - Sacramento G.G.A.                    |
| 12 - ETVC Friday Night Poker (see p.2)    | 13 - Pacific Center TS Support Group 6pm  |
| 13 - ETVC Outreach Comm. mtg. in S.F.     | 14 - Female-to-Male TS Group 7pm          |
| 16 - Pacific Center TS Support Group 6pm  | 16 - San Jose G.G.A.                      |
| 17 - Pacific Center TV/TS Rap Group       | 20 - Pacific Center TS Support Group 6pm  |
| 17 - Santa Rosa G.G.A.                    | 21 - Pacific Center TV/TS Rap Group       |
| 17 - Female-to-Male TS Group 7pm          | 21 - Santa Rosa G.G.A.                    |
| 19 - San Jose G.G.A.                      | 21 - Female-to-Male TS Group 7pm          |
| 23 - Pacific Center TS Support Group 6pm  | 27 - Pacific Center TS Support Group 6pm  |
| 24 - Female-to-Male TS Group 7pm          | 28 - Female-to-Male TS Group 7pm          |
| 25 - ETVC "Summer Social" (see p.2)       | 29 - ETVC "Legs Contest" (see p.2)        |
| 26 - Pacific Center TV/TS Rap Group       | 30 - Pacific Center TV/TS Rap Group       |
| 30 - Pacific Center TS Support Group 6pm  |   |
| 31 - Female-to-Male TS Group 7pm          |   |

October 18 - 27: "FANTASIA FAIR" (see article in Newsletter on p. 8)

**NOTE:** All groups meet at 8 pm unless otherwise specified. Further information about each group listed is given below and continued on p. 6.

\* Please note this new Pacific Center-sponsored group for transsexuals; see further details below (p. 6) and in Newsletter on p. 9.

\*\* A new group for female-to-male transsexuals which is just getting organized in San Jose. Please see further details below (p. 6).

\*\*\*\*\***Information on Calendar-listed Groups**\*\*\*\*\*

**EDUCATIONAL T.V. CHANNEL**  
**E.T.V.C.**  
P.O. Box 6486  
San Francisco, CA 94101

A Bay area "TV/TS/TG and friends" membership-based, social group. Membership is \$7 per year but not required to attend. Social events/meetings held the last Thursday each month from from 8 pm at: Chez Mollet restaurant, 527 Bryant St., San Francisco, 415/495-4527 (for dinner reservations only). Sponsors a "Significant Others Support Group" (**not for TV/TS/TG's**) which meets first Tuesday of each month at 8 pm. Call the coordinator (Arlene) at 415/928-3723 for location. See p.2 for details of all ETVC meetings, parties & socials.

\*\*\*\*\*

**CALENDAR continued on next page**



# A CALENDAR OF EVENTS

(Continued from p. 5)

**PACIFIC CENTER**  
 2712 Telegraph Avenue  
 Berkeley, CA 94705  
 415/841-6224: info.

This human growth center sponsors a TV/TS rap group which meets the first & third Wednesdays and last Friday each month, starting at 8 pm. Another place to go out dressed. Also sponsors a TS Support Group which meets every Tuesday from 6-9pm. Fee for both groups is a \$3 suggested donation.

**GATEWAY GENDER ALLIANCE (G.G.A.)**  
 484 Lake Park Ave., Apt 427  
 Oakland, CA 94610  
 415/763-6185

A national TV/TS organization with branches in the San Jose, Santa Rosa and Sacramento areas. They hold low key discussion meetings and an occasional party. They produce a monthly magazine The Phoenix and have a correspondence service. Dues are \$25 per year to join as an Associate Member and donations are requested at each meeting. You do not have to be a member to attend the discussion meetings.

**SAN JOSE G.G.A.**

Meetings are the first and third Fridays each month at 8pm at: New Community of Faith Church, 6350 Rainbow Drive, San Jose. Call 415/763-6185 for more information.

**SANTA ROSA G.G.A.**

Meetings are the first Friday and third Wednesday of each month at 8pm at 3635 Montgomery Dr., Santa Rosa. Contact Fred at 707/575-0606 after 6pm for more information.

**SACRAMENTO G.G.A.**

Meetings are held the second Friday at 8pm each month at: M.C.C. Church, 2741 34th St. (34th & Broadway), Sacramento. Contact Pati Fink at (916) 371-8491 for details.

**FEMALE-TO-MALE  
 TRANSSEXUAL GROUP**

San Jose, CA

New support group for female-to-male transsexuals. Meetings are held every Wednesday from 7-9pm at The Billy DeFrank Community Center, 86 Keyes St., San Jose. For more information call the Center at 408/293-4525 and leave a message for Hal at 408/293-2429.

**KIM'S KORNER**

(Continued from p. 1)

7) ETVC is now known coast to coast and has been mentioned in the newsletter of the Bay Area Psychologists' Association.

By all measures a very successful year!! This kind of achievement takes lots of hard work and I would like to thank Robin, Ginny, Nancy Ann and Liana for a fantabulous effort in helping ETVC have a banner year.

Last newsletter I wrote about Shangri-Ches, an idealized group (bearing some resemblance to ETVC) that **might** be possible. As we start our fourth year I want to encourage everyone in ETVC to get involved on a committee. The Committees are: Social, headed by Vanessa and Fifi; Outreach, headed by Barbara and Diahanna; Newsletter, headed by Jo-An; and Hostess, headed by Andi.

Continued on next column

When your officers and committee chairpersons ask for your help they know you are a busy person. But with your help the numerous tasks that make ETVC function can be accomplished easily, with minimal time commitment from each person and with fun for everyone.

So don't delay! Sign up today to help on a committee as we start our 4th year!!

Treasurer's Report

When the books were formally transferred from Robin to Nancy Ann at the end of the ExCom meeting of June 1st, in a ceremony dripping with pomp and circumstance, our assets consisted of \$400 in our bank account and about \$100 in stamped envelopes. This compares very favorably with the deficit that existed when Robin took over the books 15 months ago. Our outgoing treasurer is leaving on a fiscally-sound and happy note!



Executive Committee News

The Executive Committee met at Liana's home on June 1st and we had our largest meeting ever: Kim, Nancy Ann, Ginny, Jan, Robin, Liana, Vanessa, Jo-An, Diahanna, Inge, Kathy, Gwen, Gloria and Carol all attended. Whoooooee! At the conclusion of a long evening of business, we all felt that a successful transfer of responsibility from the retiring officers to the new officers had occurred.

The next two ExCom meetings are scheduled for Saturday evening, July 6th in San Francisco and Saturday evening, August 3rd in Richmond. Both meetings start at 7:30 pm. The new officers would be delighted to have you join them. Ask any officer for directions.

Outreach Committee News -- Part 1  
(from the retiring Outreach Chair)

ETVC finished the 1984-85 membership year with a grand total of 128 members! HOORAY ETVC!! Although we do not have accurate records from last year we believe that this figure is more than double the figure from 1983-84. Equally impressive is the fact that, as of June 20, we already have 48 members for the new membership year 1985-86. This figure is, by itself, nearly equal to the number of members we achieved two years ago. Everyone in ETVC can take credit for making our parties fun and comfortable events to attend, particularly for newcomers. As one "first-timer" wrote to us recently, "Attended my first meeting of ETVC and, to be honest, I was really impressed. Everyone I met was friendly and made a 'newcomer' not only feel comfortable and at ease, but right at home." Let's all try to keep up this level of hospitality. Everyone should especially consider participating as a hostess; talk to Kim about this.

We placed another four-week classified ad in the Bay Guardian (see ETVC Newsletter Vol. 3 #2 for copy of the first ad we placed in the Bay Guardian last year) which appeared as follows:

TV/TS Social Organization  
Monthly socials in San Francisco for crossdressers. Discretion assured.  
ETVC, PO Box 6486, San Francisco, CA 94101.

Continued on next column

For some reason, we received only 10 replies to this ad, although a similar four-week ad that we ran in February garnered 25 responses. Perhaps it was the time of year, or the fact that the prior ad was about twice as long (and expensive).

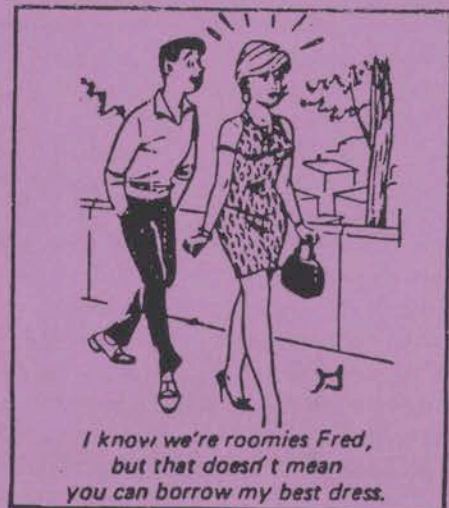
We recently received a newsletter from the Seahorse Club of Victoria, Australia. They became the sixth TV/TS club to respond to the mailing of our newsletter to similar clubs listed in the TV/TS Tapestry which we did back in February, and the first club to respond to us from overseas!

Outreach Committee News -- Part 2  
(from the new Outreach Co-Chairs)

On Saturday, June 15th, the new and exciting Outreach Committee met under the dynamic leadership of Barbara and Diahanna. Also attending were Jan, Judy, Carol and Kim. Stay tuned to this column for further details of our plans and ideas for Outreach in the coming year. Our next meeting is Saturday, July 13th, at 2pm. Ask Barbara or Diahanna for location. All are invited!

TV/TS Dating Service

The Network, P.O. Box 632, Waukesha, WI 53187-0632, works with people of all lifestyles (TV, TS, gay, bi) and seeks to bring people together in relationships. A year's membership in their dating service, which includes a monthly newsletter sent by first class mail in a plain envelope, is available for \$50. For \$60 one is also entitled to a personal ad in each newsletter. Contact Dee Dailey, the editor, at the above address.





Should ETVC Fund Alcohol?

At the last ExCom meeting (June 1st) it was proposed that ETVC adopt a policy that ETVC will not fund (i.e. purchase, using ETVC funds) alcohol at any of its social functions. This policy does not preclude anyone from buying their own alcohol at the Chez's bar. It would simply bar ETVC from using its own monies to provide alcohol as part of its meetings. This proposed policy was sufficiently controversial that the officers decided to bring it before the membership for a vote at the July 25 Chez Mollet meeting.

Please read the article below which sets out the pros and cons of the argument, and feel free to express your opinion to any ExCom member.

Arguments for funding alcohol include:

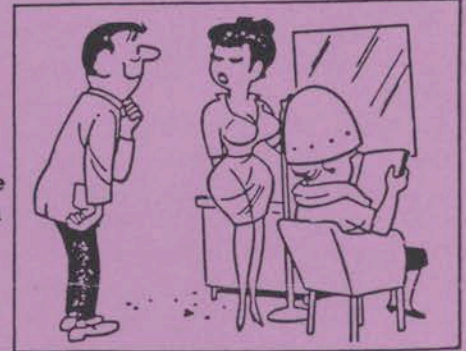
- \* it's a moral imposition on those who enjoy and have no problems with it;
- \* it's an edict, a rule requiring adherence which may sometimes be broken;
- \* it restricts the pleasure of alcohol users;
- \* it's an empty gesture since meetings are held in a bar anyway;
- \* it's basically a non-issue since ETVC only buys alcohol for occasional special parties and celebrations;
- \* it's too political an issue for a social organization;
- \* it's too potentially divisive;
- \* the legal/moral question is not really a threat because we do not serve alcohol at every meeting nor in great quantity;

Arguments against funding alcohol include:

- \* it's a moral imposition on those who either do not like or cannot touch alcohol to encourage its use thru funding it;
- \* many people, as alcoholics, must always struggle to resist alcohol. Such a policy is a recognition of (on the part of the group) and support for the alcoholic in his/her struggle to stay away from it;
- \* it's a necessary policy for a socially responsible organization in the context of a society coming to grips with the problem of alcohol and its effects;
- \* a club's policies vis-a-vis an important issue such as alcohol help set a tone or style for the meetings of the group;
- \* alcohol is still available at our meeting place if an individual so chooses;

Continued on next column

- \* it's potentially divisive to not recognize the needs and problems of those who choose not to consume alcohol;
- \* funding alcohol is as political an act as not funding it;
- \* what is ETVC's legal or moral responsibility if someone gets hurt at our meetings while they are drunk?



**"You brought your wife's wig in? Of course we can style it. But why are you so nervous? Mr. Smith here wears his when he comes in."**

TV/TS Vacations

If you're ready for your vacation but have no plans as yet, you might consider the 11th Annual Fantasia Fair, sponsored by The Outreach Institute in Boston, MA, which will be held in the unique and friendly setting of Provincetown, MA, at the tip of beautiful Cape Cod, from October 18th thru the 27th. The program includes several major events: a Fashion Show, the Fantasia Fair Follies, the Town & Gown Supper, the Fantasy Ball and the Awards Banquet; a number of fun affairs such as Kite Fly and Whale Watch; and a comprehensive offering of workshops and seminars such as a Fashion & Beauty Course, Speech Improvement Program, Personal Growth Workshop, Spouses' Workshop, Legal Seminar, Medical/Health Issues Seminar, Sociological Development Seminar and an Outreach Institute Seminar.

Registration fees for motel lodgings for the week plus two weekends (10 days) are \$595 for double occupancy, \$695 for single occupancy, and \$1045 for a married couple. Rates for shorter stays and for apartment lodgings are also available.

Several ETVC members have attended previous Fantasia Fairs. Speak to Kim (Coordinator) if you'd like to talk with them about their experiences.

It now appears, alas, as though "Dream '85" will not happen. Contact ETVC for the latest information.



Color Me Beautiful!

On Saturday afternoon, June 2nd, 14 of the girls from ETVC again managed to crowd into Ginny and Nancy Ann's living room for a fantastic make-up session with Herman. [See Vol. 3, #6, p.2 for a report on the incredible first session.] We all arrived without our make-up or wigs on -- an unusual sight for members. With Herman coaching us individually and as a group, we learned several tricks that would help transform us into some of the most gorgeous girls I've seen.

To begin, we used a single "knee high" (no need for Evan Picone hose here, girls) to cover our hair and secure it with a band of surgical tape. Herman then helped us tape our eyebrows to lift them and open our eyes. We also took a 'tuck' on each cheek. This technique provides an instant but temporary facelift which helps give the face a more open, feminine appearance.

Herman started by telling us to "throw out your liquid foundations" and demonstrated the use of two coats of foundation. We dabbed on a base coat of a dark color to cover our beards. Over this base we spread a natural color chosen to blend with our individual skin tone. The foundation was then set with a translucent powder.

With our foundation complete, we started on the eyes, the most important area of the face. Herman suggested using either a little "Erase White" or "Shimmer" eye cream to be applied just below the lower eyelid and on most of the upper eyelid. This was followed by a base coat of light eyeshadow on the upper lid. Over this a darker shade was used to accent the eye. After brushing on a liquid eyeliner, Herman applied false eyelashes to finish our feminine eyes. He used eyebrow penciling to define a well-shaped brow.

Rouge was brushed over the upper cheek and extended up to the temple. Highlights of rouge were dabbed on the forehead, the end of the nose and the chin to give color and shading to the flat foundation. Lips were painted on to give the mouth a more flattering shape.

Our makeup was now complete, but the transformation wasn't. The final step was the magic Herman performed on our wigs,  
Continued on next column

teasing, brushing and styling them to bring out our faces. We were all amazed as we saw the final results of Herman's creative work come to completion. I don't think anyone could help but smile as each girl was finished. And of course we all enjoyed seeing the finished product as we looked at ourselves in a full-size mirror.

By 6:30pm (five hours later!) Herman had finished us all. Diahanna took several pictures from start to finish and Ginny took portraits of the "finished" women for the ETVC album. We all learned from this session and are eagerly looking forward to Herman's next session with ETVC. Perhaps next time we can also plan a special social event following the session so that we can enjoy our good looks for the whole evening. Everyone - including Herman - had a great time and learned a lot. **Thank you, Herman, for your generosity and tremendous contributions to ETVC.**

--Gloria

Here is a reference list of the products Herman used:

- \* Johnson & Johnson Surgiclear surgical tape (available at drugstores or surgical supply houses)
- \* foundation: Max Factor Pan-Stick color #665J for beard cover (available at theatrical supply stores)
- \* a natural shade to match your skin tone (available at any cosmetic counter)
- \* Max Factor Erase White accent cover-up
- \* The Face Place Shimmer eye cream

New TS Support Group at the Pacific Center

The Pacific Center in Berkeley has initiated a transsexual support group that meets each Tuesday from 6-9pm. It is a drop-in format in which an open discussion of the issues in people's lives takes place. The co-facilitators are Christina Taylor, who has facilitated the Wednesday night TV/TS rap group for some time, and Janet Taylor (no relation), a sex therapist who is a member of the PC staff and also associated with Wardell Pomeroy's Institute for the Advanced Study of Human Sexuality. Recently about 8-10 people, apart from the facilitators, have attended. Although there has been some discussion of changing the date of the group's meeting, it is listed on the calendar in this newsletter for Tuesday. You should check the dates with the Pacific Center (415/841-6224) before attending your first meeting.



## ADVERTISEMENTS

ETVC sells advertising space at the rate of \$10/business card-size ad per issue; \$50 for same per year. If you would like to advertise here, just send us your business card or camera-ready ad copy, along with a check for the appropriate amount, to:

ETVC, P.O. Box 6486, San Francisco, CA 94101

Deadlines are the first weekend of the month of publication (June, August, October, December, February & April). Information on rates and terms for ads larger than business card size is available by writing to us at our P.O. Box address above.

### THE SAN FRANCISCO ELECTROLYSIS CLINIC

Hair Permanently Removed - Professionally

Registered Electrologist - Specialist  
Confidential Complimentary Consultation

Bill Fontes, Jr., B.A., R.E.  
Electrolysis Director  
Greg Lomeli R.E.  
Staff Electrologist

Medico-Dental Building  
490 Post St., Suite 1122  
San Francisco, CA 94102  
Phone 956-7111

### BREASTS

Clinical quality at low prices.

Send \$3 for Breast Buyer's Guide (30pp)  
Cost refundable with purchase.

Ken/Kathy Pool, PhD  
P.O. Box 10031  
Berkeley, CA 94709

408 249-2205

### MILDRED L. BROWN, PH.D.

SEX THERAPY & EDUCATION  
GENDER IDENTITY COUNSELING

700 W. PARR, SUITE K  
LOS GATOS, CA 95030

1537 FRANKLIN, SUITE 205  
SAN FRANCISCO, CA 94109

Clifford Drumeller RE, REI

Pat A. Moore RE

### THE PERMANENT HAIR REMOVAL CLINIC

22612 Foothill Blvd.  
Suite 200C  
Hayward, CA

(415) 581-1494  
Four Blocks From  
Hayward BART

## PERSONAL ADS

ETVC will accept personal ads from ETVC members at the rate of per 3 lines. We will not accept ads with a purely sexual objective. Send ad copy and a check for the appropriate amount to:

ETVC, P.O. Box 6486, San Francisco, CA 94101.

Deadlines are the first weekend of the month of publication (June, August, October, December, February & April). Information on rates and terms for ads other than the standard size is available on written request to our P.O. Box address above.

TS living in N. Calif. seeks room to rent for 2 days each week in S.F. or East Bay. Phone Clare at 707/987-9309.

Oakland TV, 5"10", 140 lbs, 40's, single, versatile, discreet, attractive, seeks slim single TV for on-going weekend relationship. Experienced or novice. Please write D. Hansen, 537 Jones St. #772, San Francisco, CA 94102 (Denise)

TS (not yet cross-living) is interested in sharing apt. with sympathetic roommate in S.F. Please call Bret at 415/726-3181.

**Please Note:** The Harmony Valley Inn, whose advertisement appeared here last issue, has been forced to close. Jennifer, the proprietor and an ETVC member, has moved to Florida and reports that she is "hoping to develop something for our people here, a real international fun place."



"You forgot your pink dress!"